

MachineLogic for MMv2 with Universal Robots (URCap v3.x)

Contents

[Overview](#)

[1. Install the URCap](#)

[2. Connect your system](#)

[2.1 Connecting the UR and MachineMotion controllers](#)

[2.2 Connecting the MachineMotion to Actuators](#)

[3. Set up the Network](#)

[3.1 Robot Safety Module Method](#)

[3.2 Configurable Address Method](#)

[4. Configure your system](#)

[4.1 Upper Window](#)

[4.2 Lower Window](#)

[5. Use MachineLogic for Universal Robots](#)

[5.1 Program Screen](#)

[5.2 Manual Control](#)

[5.3 Command Screen](#)

Overview

Vention offers Universal Robot Capability (URCap) extension packages which enable simple programming of Vention motion systems from the UR teach pendant. Once loaded in the UR Polyscope HMI, URCap integrations make it simple and cost-effective to create systems combining UR six-axis robot arms with Vention's MachineMotion-controlled components.

This document describes **MachineLogic for Universal Robots**, a URCap that enables seamless integration of motion components such as enclosed linear axis, ball-screw linear axis, rack-and-pinion linear axis, pneumatic systems, and roller & belt conveyors. Once connected to a UR six-axis robot arm, those components enable applications like [range extenders](#), [cobot palletizers](#) and other custom robot cells.

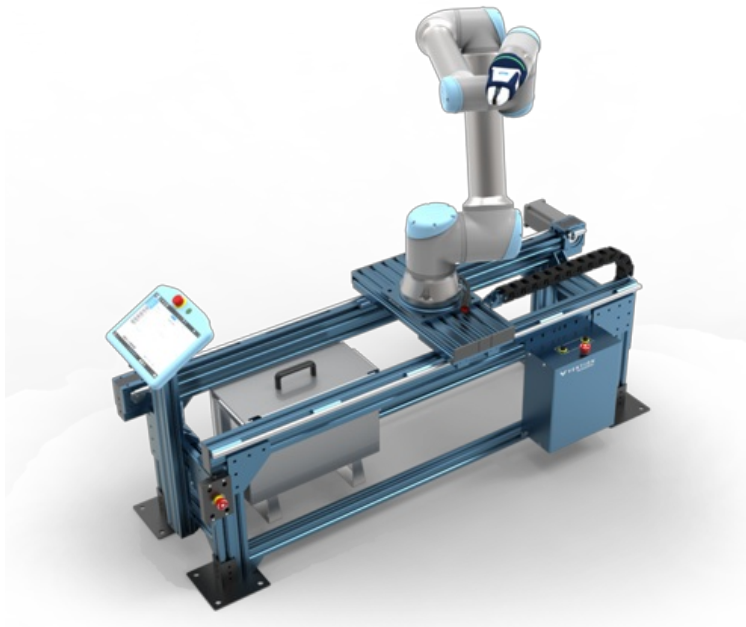


Figure 1: UR10 mounted on a 7th axis Range Extender

1. Install the URCap

Step 1: Insert the USB drive

Vention's *MachineLogic for Universal Robots* software is distributed on a USB flash drive and must be installed on the UR teach pendant. To install the URCap, insert the USB drive into the UR teach pendant's USB port.

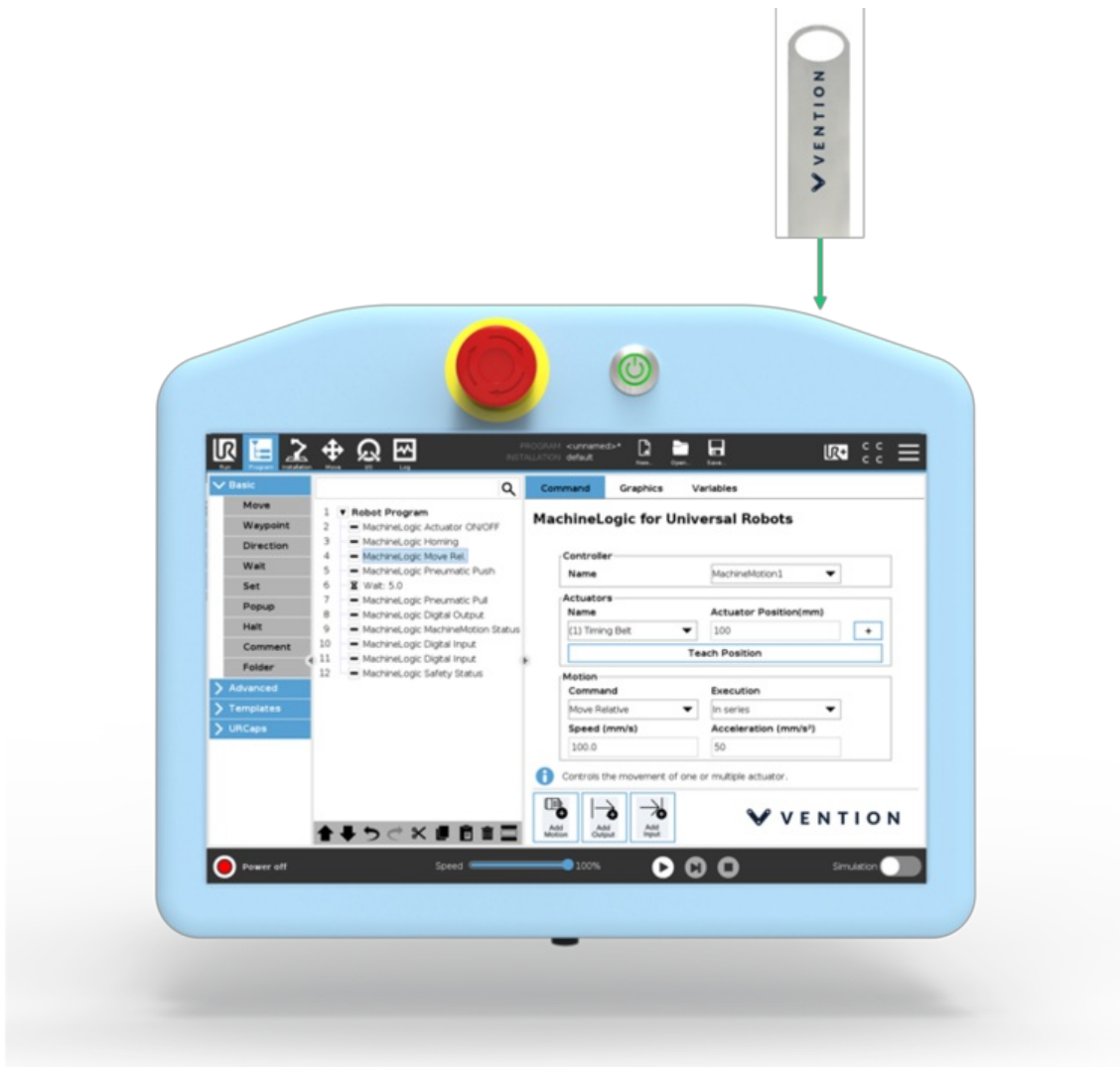


Figure 2: Location of the UR teach pendant's USB port

Step 2: Add the URCap to the UR environment

On the teach pendant home screen, select **Menu > Settings** (see Figure 3a).

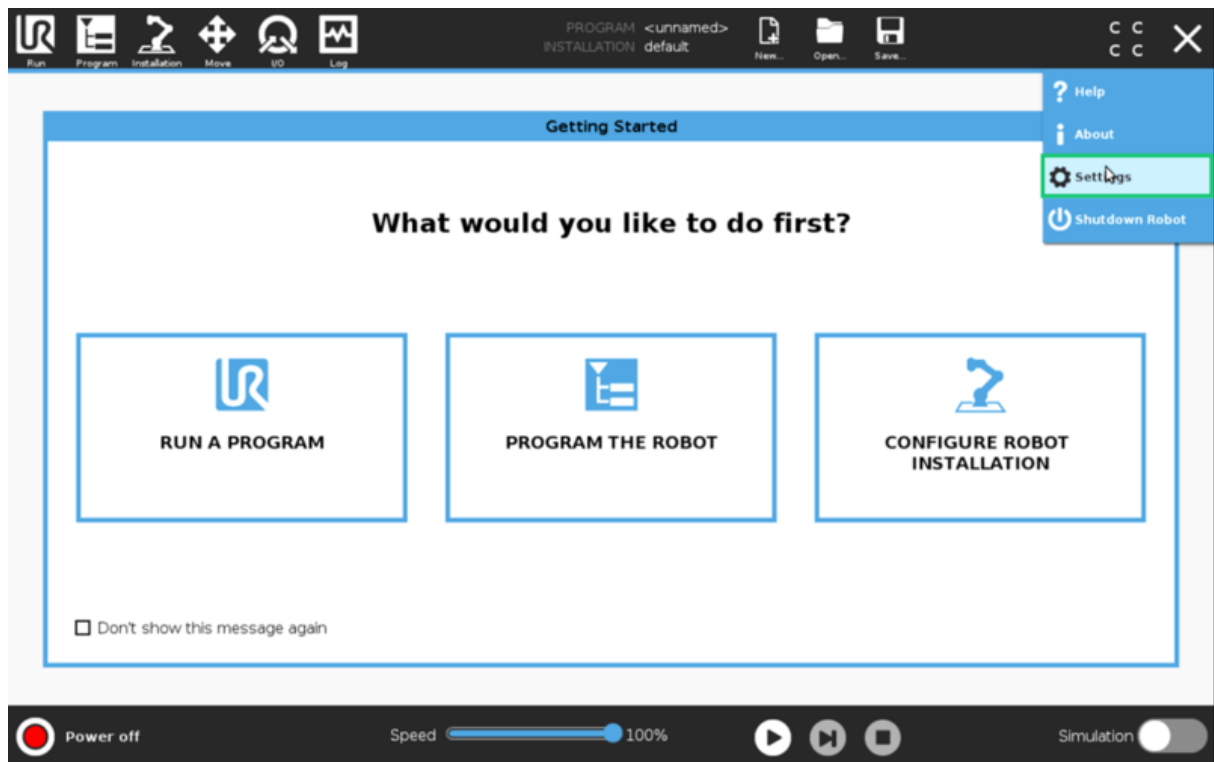


Figure 3a: Opening the settings screen

Select **System** > **URCaps**, then click the + icon at the bottom of the screen to add a new URCap to the UR teach pendant (see Figure 3b).

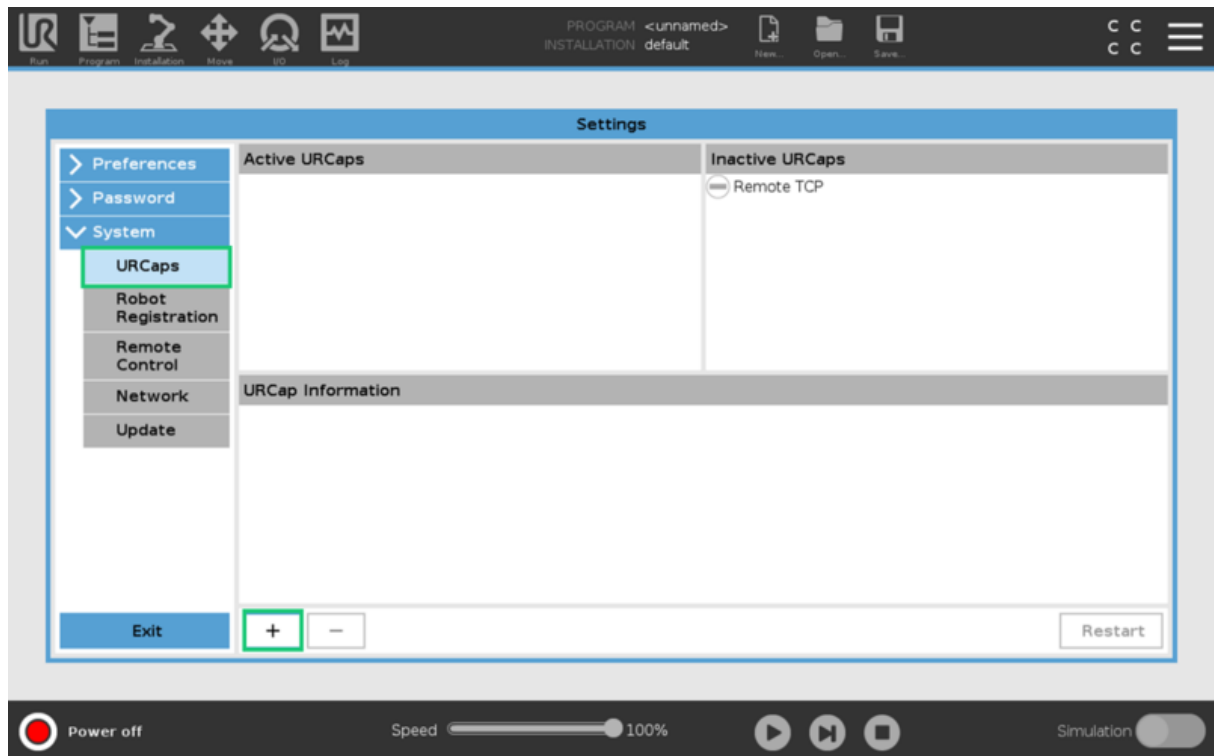


Figure 3b: Opening the URCaps installation screen

Select the **.urcap** file and click **Open** to install the URCap extension (see Figure 4a).

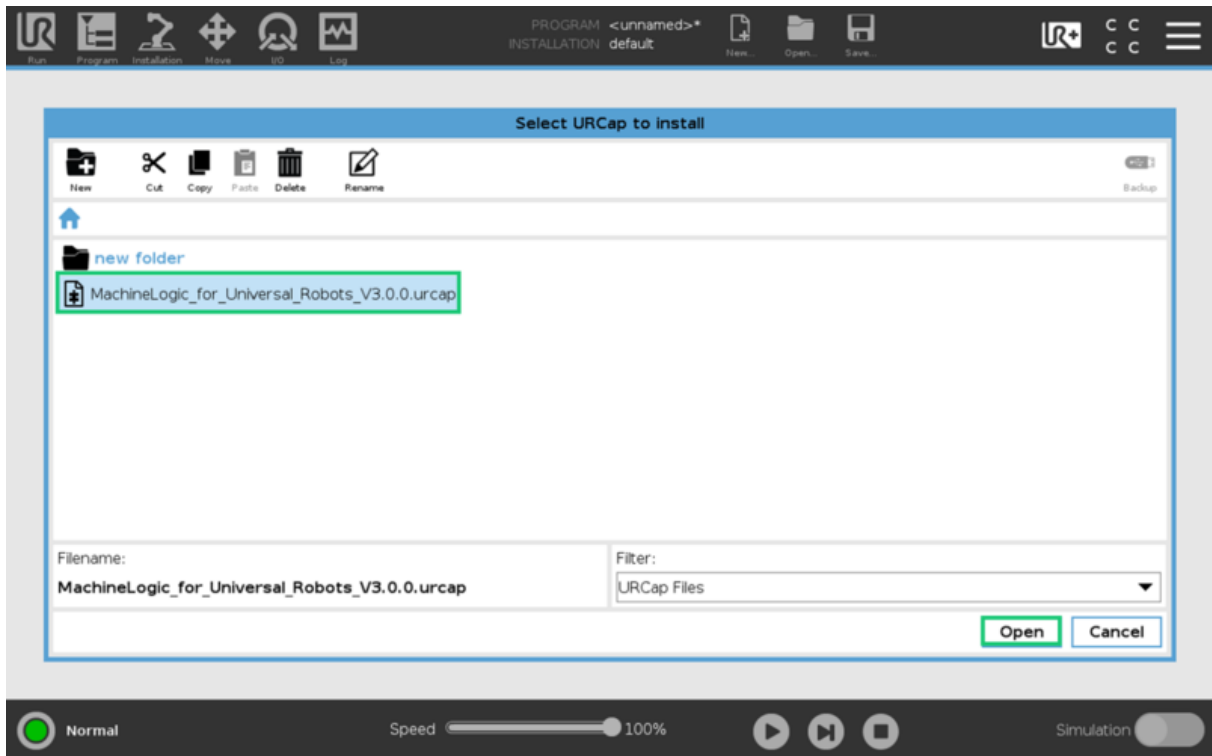


Figure 4: Adding the URCap file

Step 3: Restart the UR controller

When prompted to do so, restart the UR controller to complete the installation (see Figure 5)

After restarting, you are ready to physically connect the controllers, actuators, and sensors.

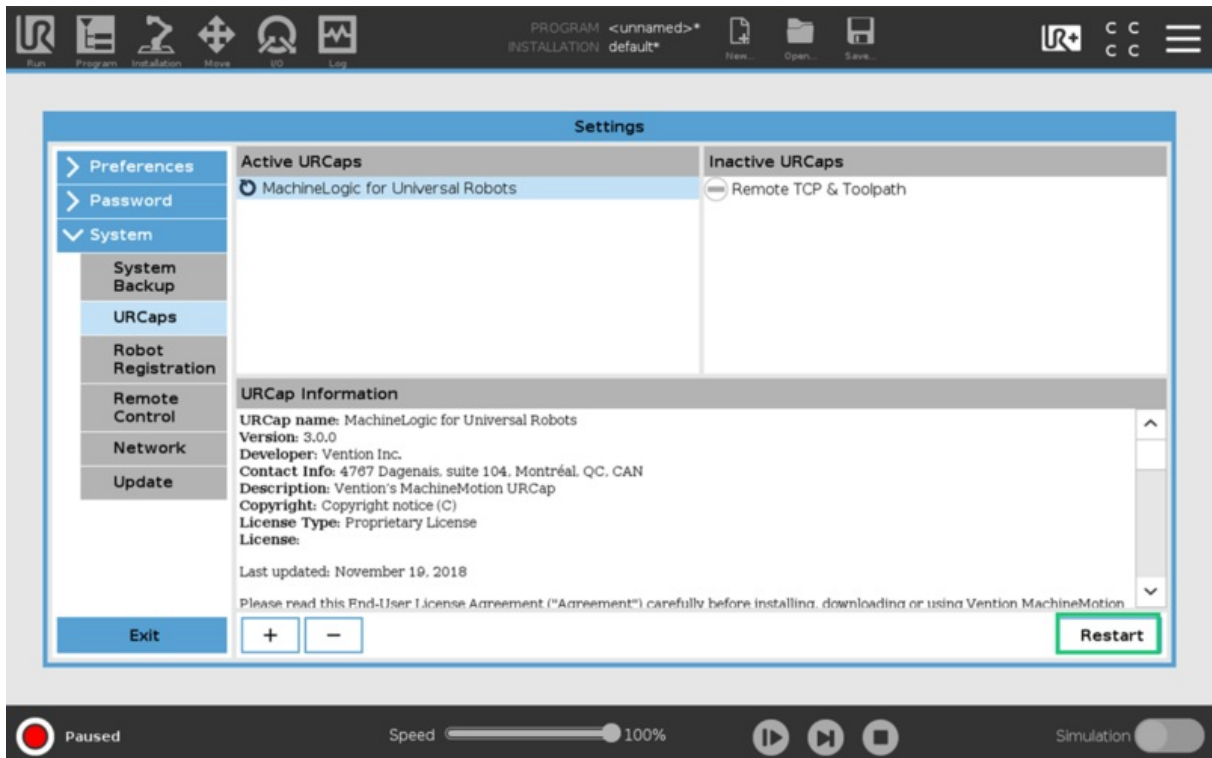


Figure 5: Restarting the system

2. Connect your system

The MachineMotion controller has several connectors. Each connector is meant for use with certain device types. Use the following tables and images (Figures 6) to connect your system. **Add jumpers to all unused CONTROL & SAFETY IN/PENDANT ports.**



Figure 6: MachineMotion V2 controller front panel

Table 1: MachineMotion V2 front panel components & connectors

Device	Vention Part Number	MachineMotion Connector
Servo motors	MO-SM-01X-0000	DRIVE1, DRIVE2*, DRIVE3*, DRIVE4*
Pendant	CE-TP-004-0001_2	PENDANT
Control Modules	CE-MD-00X-000X	CONTROL1, CONTROL2, CONTROL3, CONTROL4
Safety system input	Input used to place the system in emergency stop mode (redundant dry contacts). IMPORTANT: It is required to connect a safety device here. This could be an e-stop and reset module or another safety device that connects to the flying leads end from the safety cable.	Safety In

Device	Vention Part Number	MachineMotion Connector
Safety system output	Output used to trigger the system inputs of other devices (redundant dry contacts)	Safety Out
Additional MachineMotion v2 controllers	CE-CL-010-0004 , CE-CL-010-0001	LAN1, LAN2
Mouse & keyboard	Personal mouse, keyboard to operate MachineMotion V2 interface	USB
Monitor	Personal monitor to operate MachineMotion V2 interface	HDMI
MachineMotion v2 software update	Update MachineMotion v2 hardware with SD card	micro SD

**Only available on CE-CL-010-0004*

The safety input and output allow MachineMotion to participate in a unified safety solution where the UR Controller is the safety parent or the UR and MachineMotion controllers are configured in a safety loop.

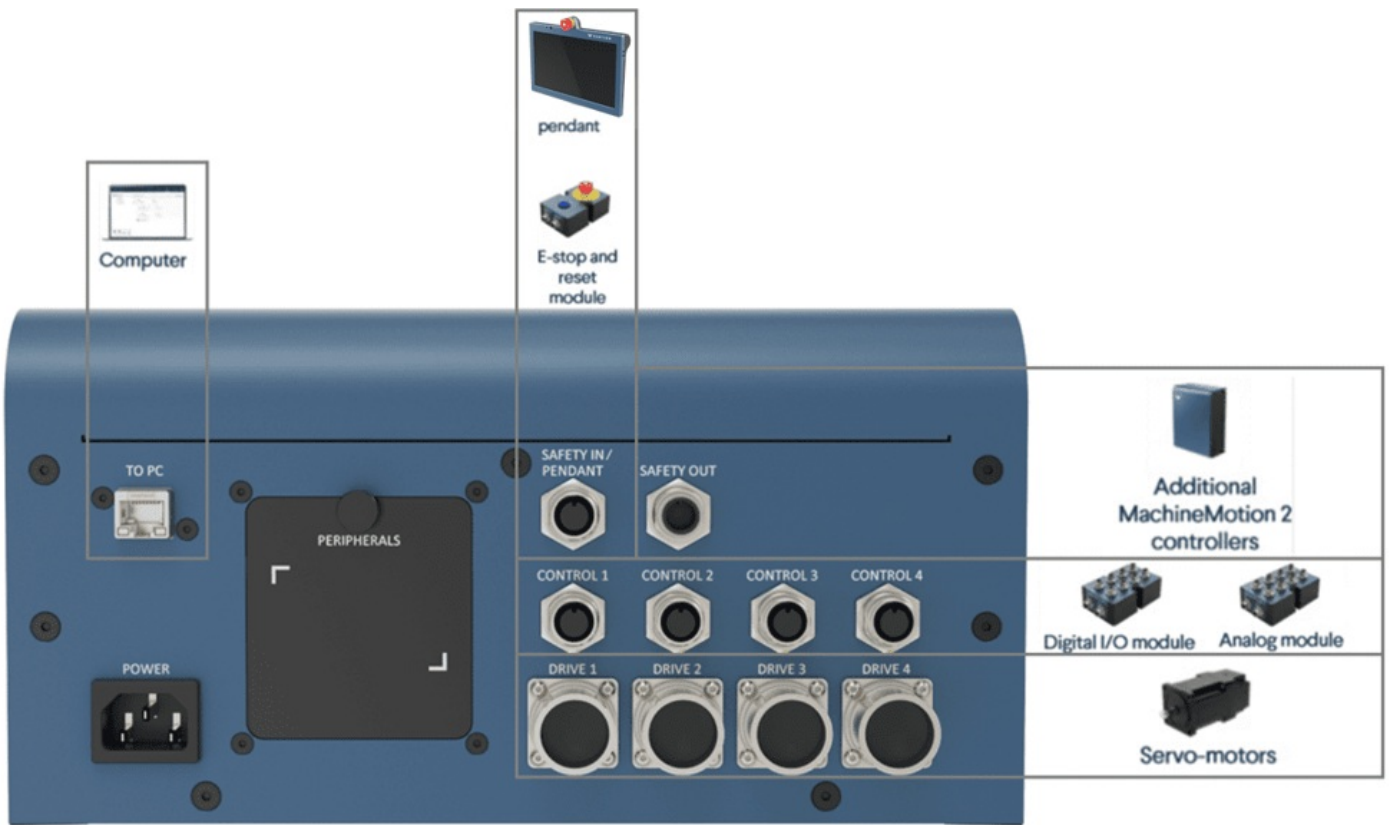
With the UR Controller configured as the safety parent, pressing the UR E-stop button triggers an emergency stop at the MachineMotion controller. When configured in a safety loop, triggering either E-stop will cause both the UR and MachineMotion E-stops to be triggered.

We recommend configuring MachineMotion as a safety child when used in Vention robot cell applications. See our guide on [Universal Robots Safety Configuration with MachineMotion](#) for more details.

2.1 Connecting the UR and MachineMotion controllers

This section discusses common MachineMotion V2 connections for pairing with a Universal Robot controller. In the configuration shown in Figure 7, the UR Controller is the safety parent controller (refer to the [Universal Robots Safety Configuration with MachineMotion V2](#) guide for more information).

Important: Make sure to add jumpers to the SAFETY IN/PENDANT port if you are not using this port.



image

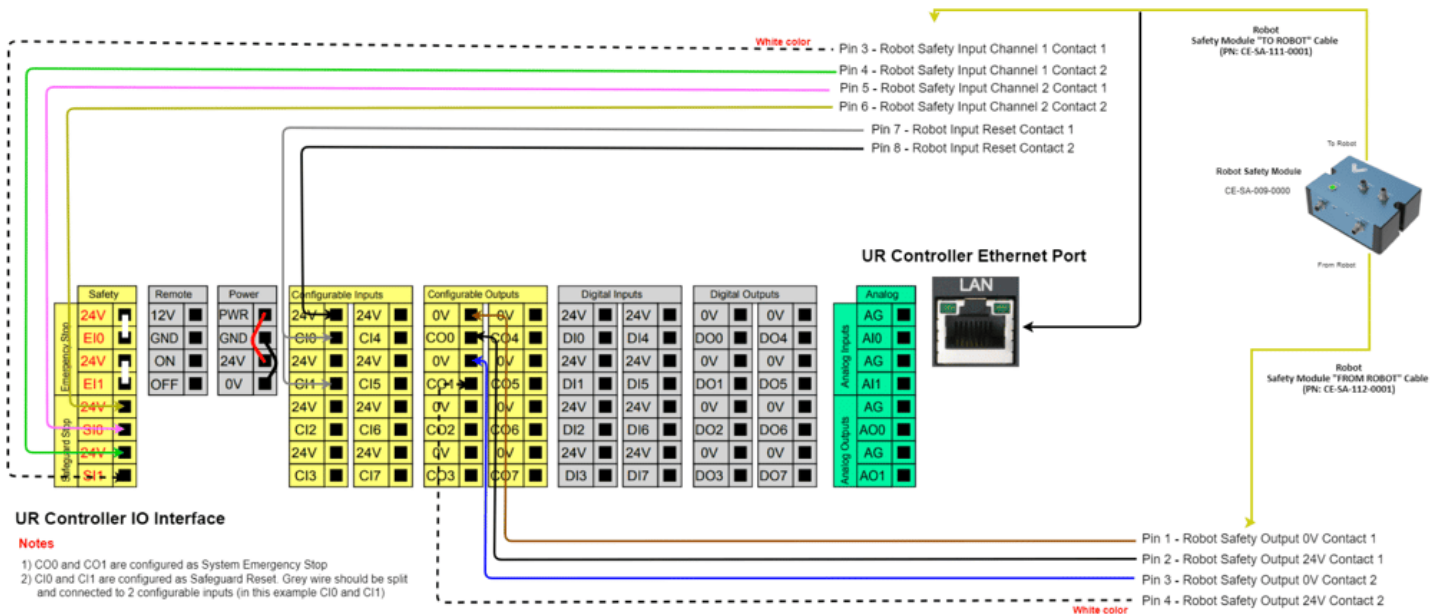


Figure 7: Wiring diagram for Robot Safety Module with Universal Robots controller

MachineMotion IP Addresses

The MachineMotion controller has two different network interfaces: LAN1 and TO PC. These two interfaces are distinct, and consequently can be configured differently. They also have different IP addresses. The table below highlights the differences between the two interfaces.

Table 3: Network adapter details

Physical Connector	IP Address	Configurable	Default Gateway
LAN1	192.168.0.2 (default)	Yes	192.168.0.1

Physical Connector	IP Address	Configurable	Default Gateway
TO PC	192.168.7.2	No	192.168.7.1

MachineMotion IP Ports

The MachineMotion controller serves multiple ports, as detailed below.

Table 4: MachineMotion server's IP ports

Service Ports	Applications
80	MachineMotion UX/UI
8888	Communication setup and basic MachineApps
9999	Communication with UR controller

UR and MachineMotion ethernet

The UR and MachineMotion controllers communicate using TCP/IP sockets on standard ethernet. We recommend using a point-to-point connection by running an ethernet cable between the MachineMotion and the UR controller. The UR controller has an ethernet connector available on its bottom panel, and the MachineMotion controller has one on its front panel (labelled ETHERNET). This direct connection requires that the IP address be statically configured. See [Static Address Method](#) in **Setup the Network** below for more details.

For a simplified networking set-up, you can also use the [DHCP Method](#) where the IP address is assigned automatically. To do this, you can use an ethernet cable to connect the UR controller ethernet connector located on its bottom panel to the TO PC connector of the MachineMotion controller. This provides a faster way to configure your system and start testing. (see [Connecting the UR and MachineMotion via Ethernet for more](#)).

Connecting the MachineMotion controller to a computer

To access the MachineMotion control center, you will need to connect your MachineMotion controller from its **TO PC** connector to a computer using an ethernet-to-ethernet or ethernet-to-usb cable.

2.2 Connecting the MachineMotion to Actuators

This section explains which parts and connections are needed when connecting Vention actuators to the MachineMotion controller. See the figure and table below for a summary of the parts and connections.

Vention's **MachineLogic for Universal Robots** URcap allows you to integrate linear, rotary and pneumatic actuators for your application.

Linear Actuators

Linear actuators are available from Vention for a variety of uses including range extenders. Vention actuators are connected to the MachineMotion controller using a motor drive and two end-of-travel sensors.

Conveyor Systems

Conveyor systems are available from Vention for building automated belt and gravity roller conveyors. Conveyors connect to the MachineMotion using a motor drive.

A through-beam sensor ([CE-SN-006-0001](#)) is typically used to stop or move the conveyor when an object is detected in front of the sensor. Connect the through-beam sensor to the MachineMotion controller with the end sensor connector.

Rotary Actuators

Vention's rotary actuator allows for application like inspection jigs and soldering stations. The rotary actuator is controlled in terms of angle (degrees) and is connected to the MachineMotion controller as a full actuator using a motor drive and two end-of-travel sensors.

The end-of-travel sensors are used to determine the rotation origin (0 degrees). The end-of-rotation sensors are used to constrain rotational applications (0–360 degrees). End-of-travel sensors are not required for free-form relative rotary applications. See Figure 8 for the MachineMotion controller connectors.

Pneumatic Actuators

Vention's pneumatic actuators may be controlled from the UR teach pendant, which allows for application like clamping and guidance systems. The pneumatic ecosystem connects to the MachineMotion controller using the [Digital I/O Module V2](#). See the [Pneumatic Ecosystem V2](#) guide for more details.

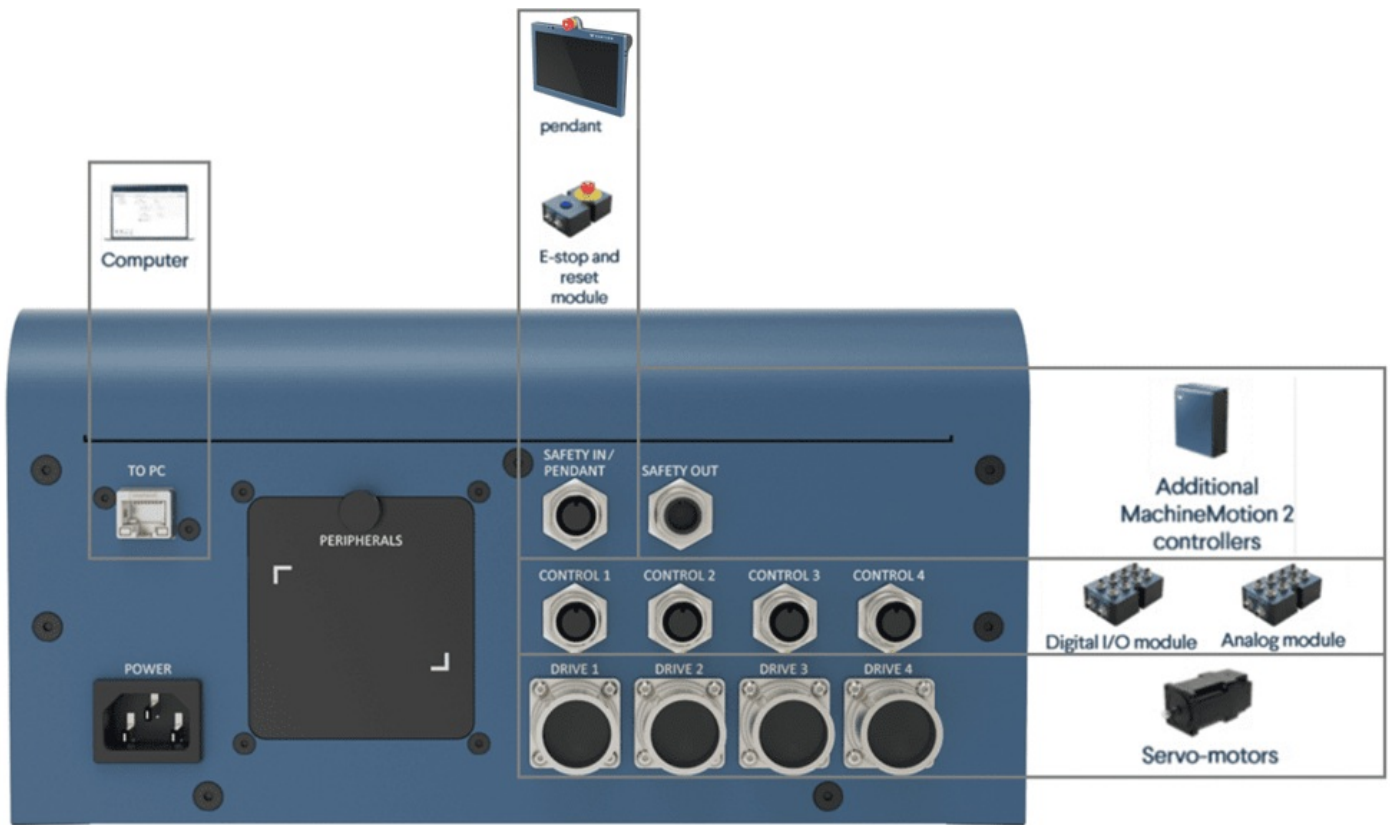


Figure 8: Connectors on the MachineMotion V2 for Linear, Rotary and Pneumatic Actuators

Table 5: MachineMotion controller connections for actuators and conveyors

Device Type	Uses in robot cells	MachineMotion Controller Connections
Linear actuators MO-LM-02X-0XXX MO-LM-16-0XXX MO-LM-0003-0XXX MO-LM-019-0001	Range extenders	<ul style="list-style-type: none"> • One (1) motor drive connection • Two (2) end-of-travel sensors
Conveyors MO-CV-00X-0XXX MO-CV-001-0585	Belt and roller conveyor systems	<ul style="list-style-type: none"> • One (1) motor drive connection • One (1) through-beam sensor
Rotary actuator MO-RM-002-0001	Inspection station, soldering & welding jigs	<ul style="list-style-type: none"> • One (1) motor drive connection • Two (2) end-of-travel sensors
Pneumatic actuator CA-CY-001-0100	Clamping & guidance systems	<ul style="list-style-type: none"> • One (1) digital IO connection

Once the MachineMotion controller is connected to the UR controller and your Vention components, you can proceed to network configuration. Configuring the network enables communication between the MachineMotion controller and UR controller.

3. Set up the Network

There are two ways to setup your network: the Robot Safety Module method and the Configurable Address method. The following sections describe both.

3.1 Robot Safety Module Method

The simplest way to configure communications between the UR controller and the MachineMotion controller is to use Vention's Robot Safety Module [CE-SA-009-0000](#).

Make sure that the MachineMotion controller is connected to the UR controller through the Robot Safety Module as per the wiring diagram [here](#).

On the UR teach pendant home screen, select **Menu > Settings > System > Network**. Select **Static Address** as your network method & change the IP address to **192.168.5.x (except .1 or .2)** (see Figure 10)

Once you see the 'Network is Connected' status on the screen (Figure 10), you can continue your configuration by jumping to the section [Configure your System](#).

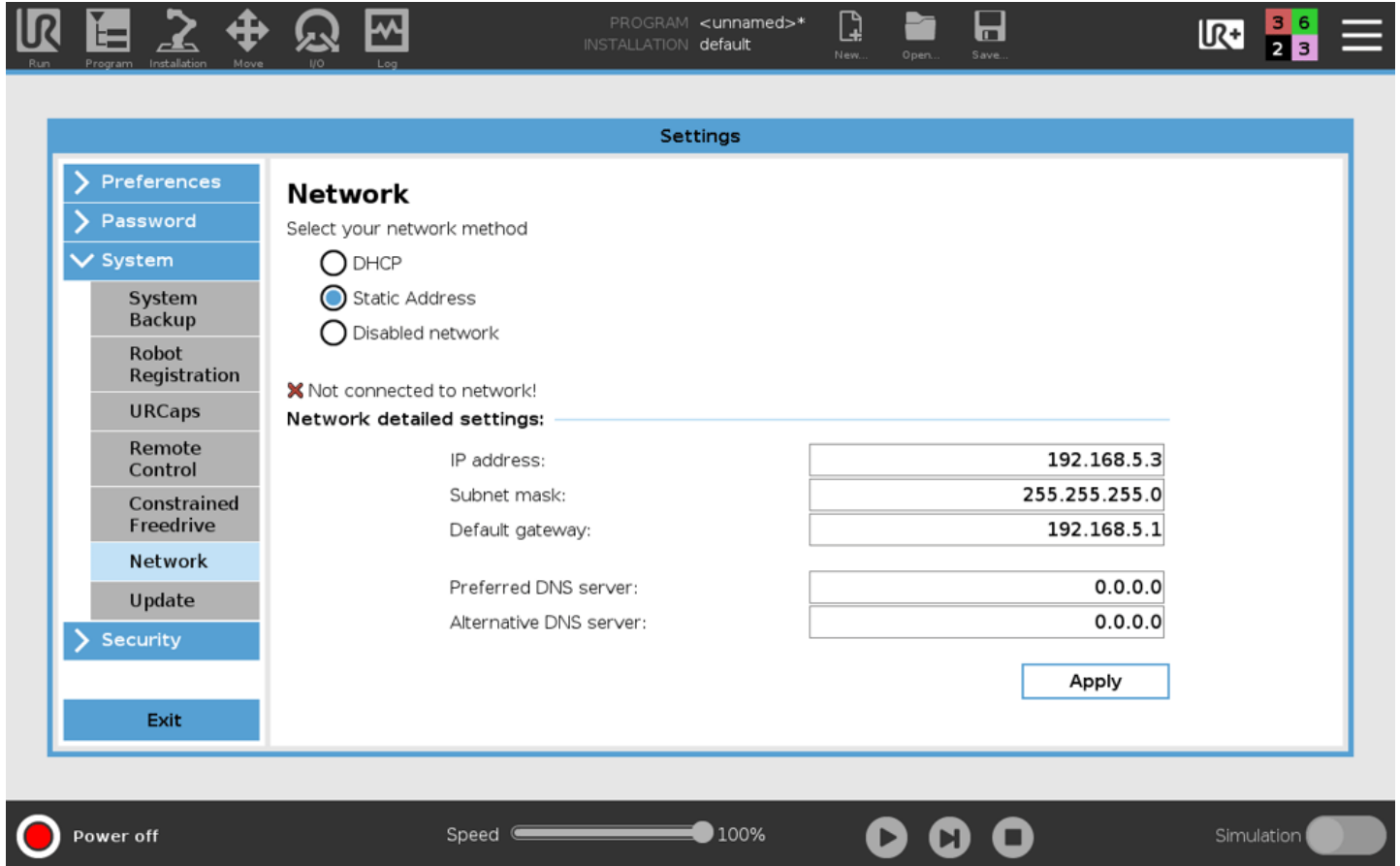


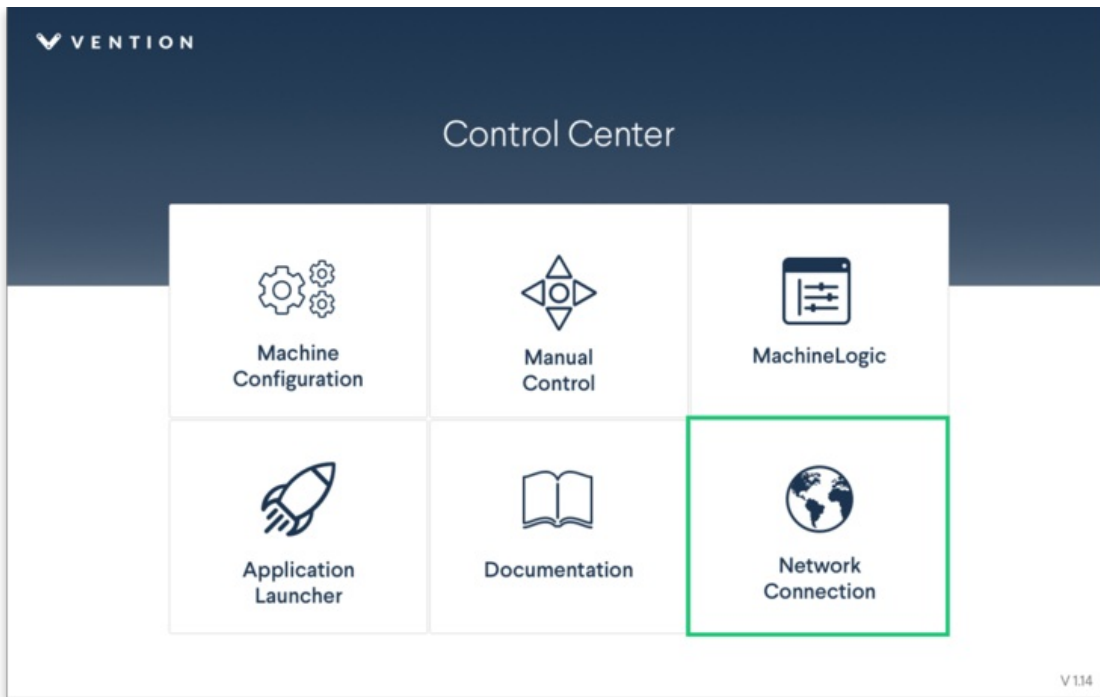
Figure 10: Robot configuration with Robot Safety Module

3.2 Configurable Address Method

Communication between the UR controller and MachineMotion uses a peer-to-peer ethernet configuration. In order for the ethernet communication to function, both devices must be properly configured. In this system, the UR controller is the controlling entity. It runs the application-level program and sends commands and queries to the MachineMotion controller.

Configuring the MachineMotion Network

1. Connect MachineMotion to a 120 V power source via the power cable and POWER connector.
2. Connect a computer that has Google Chrome installed to MachineMotion using the provided ethernet cable to the connector labelled TO PC. If using a computer that does not have an ethernet connector an ethernet-to-usb cable can be utilized.
3. Connect an ethernet cable from LAN1 to the ethernet port on the UR controller (leave the ethernet cable coming from the Robot Safety Module unplugged).
4. Turn on the MachineMotion system using the rocker switch.
5. **Wait at least 90 seconds for the system to complete its booting sequence.**
6. Using the Google Chrome browser on your computer, navigate to: 192.168.7.2
The MachineMotion Control Center main menu (see Figure 11) will be displayed.



7. From the main menu, select **Network Connection**
8. Modify the IP address of the MachineMotion controller, if desired. The default network configuration for the MachineMotion controller connected to a UR controller is as follows:
 - IP address: 192.168.0.2
 - Netmask: 255.255.255.0
 - Gateway: 192.168.0.1
9. If you have modified any of the fields or want to keep the default configuration, select **Use Static Mode** to save.

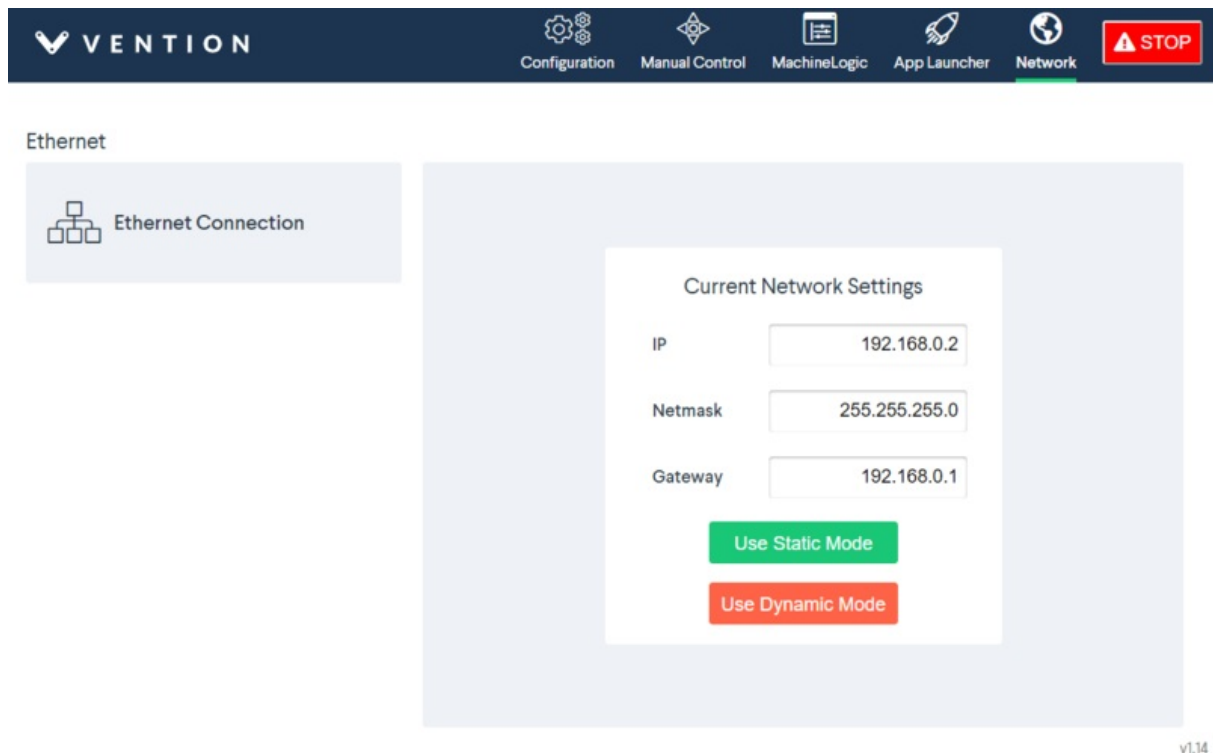


Figure 12: Default MachineMotion network configuration settings when connected to a UR controller

Configuring the UR Controller Network

On the UR teach pendant home screen, select **Menu > Settings > System > Network** (see Figure 13).

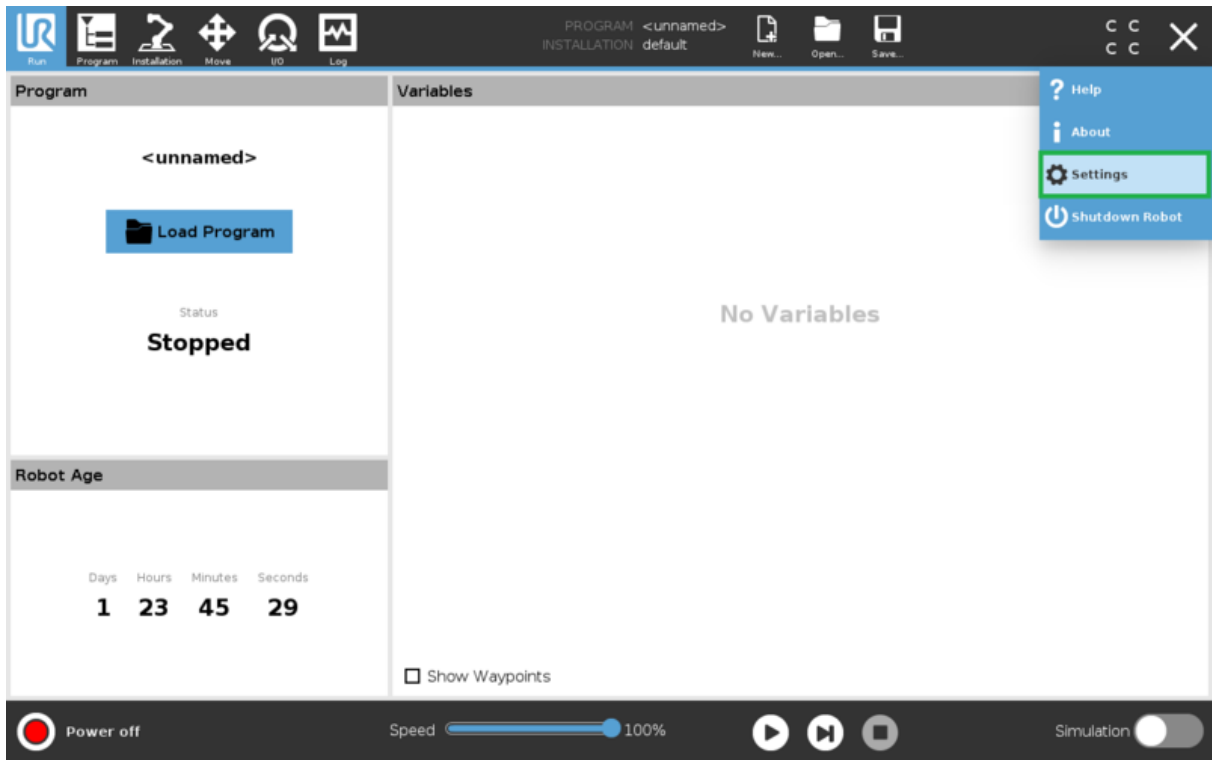


Figure 13: Opening the settings screen

Enter the parameters as shown in Figure 14. Note that here, the UR controller IP address is **192.168.0.3**, and the MachineMotion controller IP address is **192.168.0.2**. Any address in the **192.168.0.xxx** subnetwork is acceptable. The other parameters should be configured as shown in Figure 14. Click **Apply** to save your settings.

The network status line should display **Network is connected** after a few seconds. If it does, the network setup is complete.

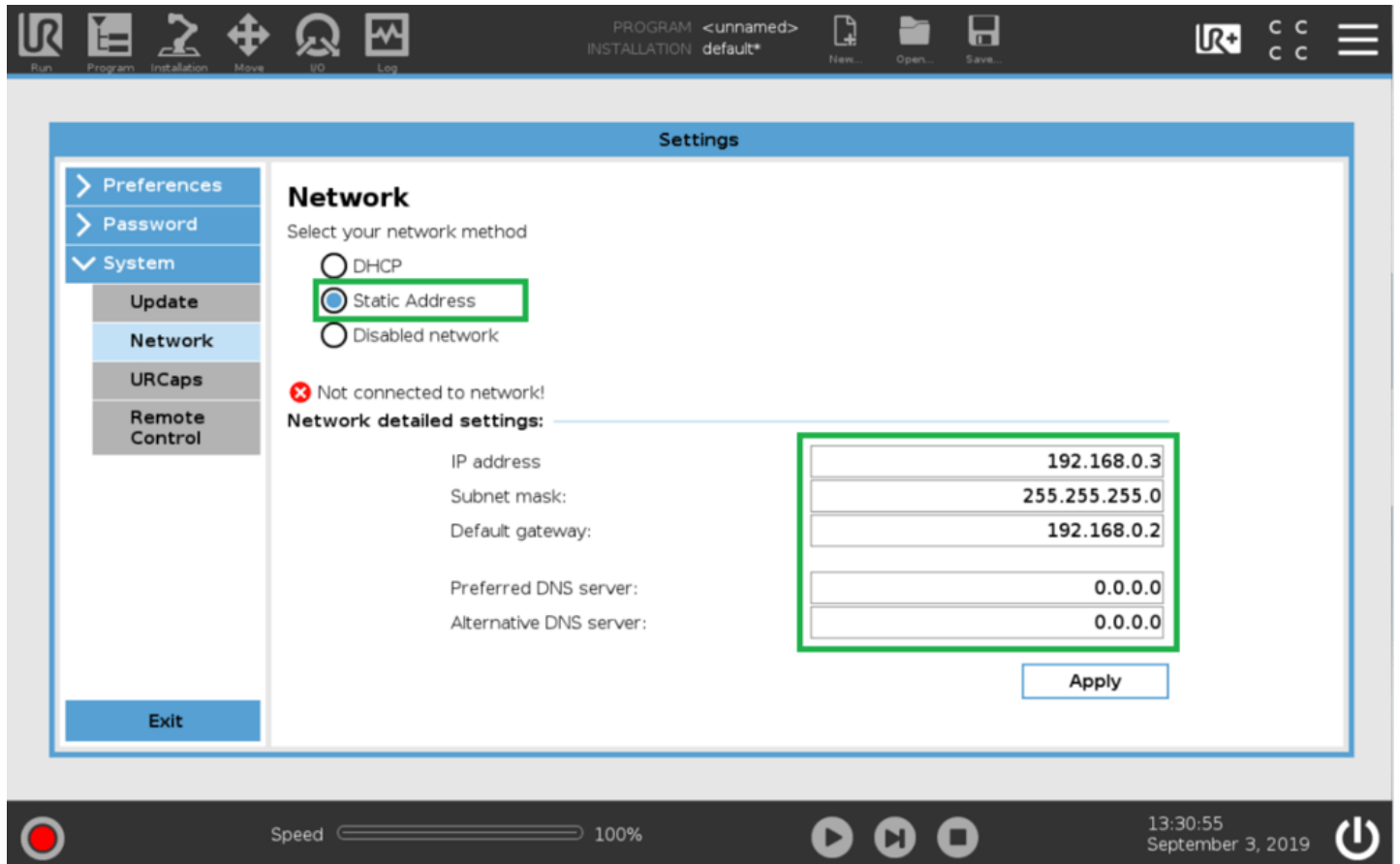


Figure 14: Network parameters setup

4. Configure your system

In order to have the UR controller communicate with the components connected to the MachineMotion controller, you have to configure your Vention components within the Polyscope environment.

On the teach pendant home screen, select **Installation** > **UR Caps** > **MachineLogic for Universal Robots**, to navigate to the Vention system configuration screen

The Vention URCap configuration screen has two main windows:

4.1 Upper Window

The upper window of the Vention URCap is used to define a MachineMotion controller instance (see Figure 15). Note that multi-controller systems can be created by adding more than one controller. To add a controller, select the + icon.

- **Controller Name:** Name assigned to the MachineMotion controller
- **IP Address:** IP address of the MachineMotion controller. In Figure 15, IP address **192.168.0.2** is used for the MachineMotion controller

You can edit the controller name by clicking on the default *MachineMotion* name and using the keypad to enter the desired name.

Important: If you are using the Robot Safety Module method networking approach, you have to overwrite the IP address value with **192.168.5.2** (see Figure 16). To overwrite, click on the IP address field and use the keypad to enter the new IP address.

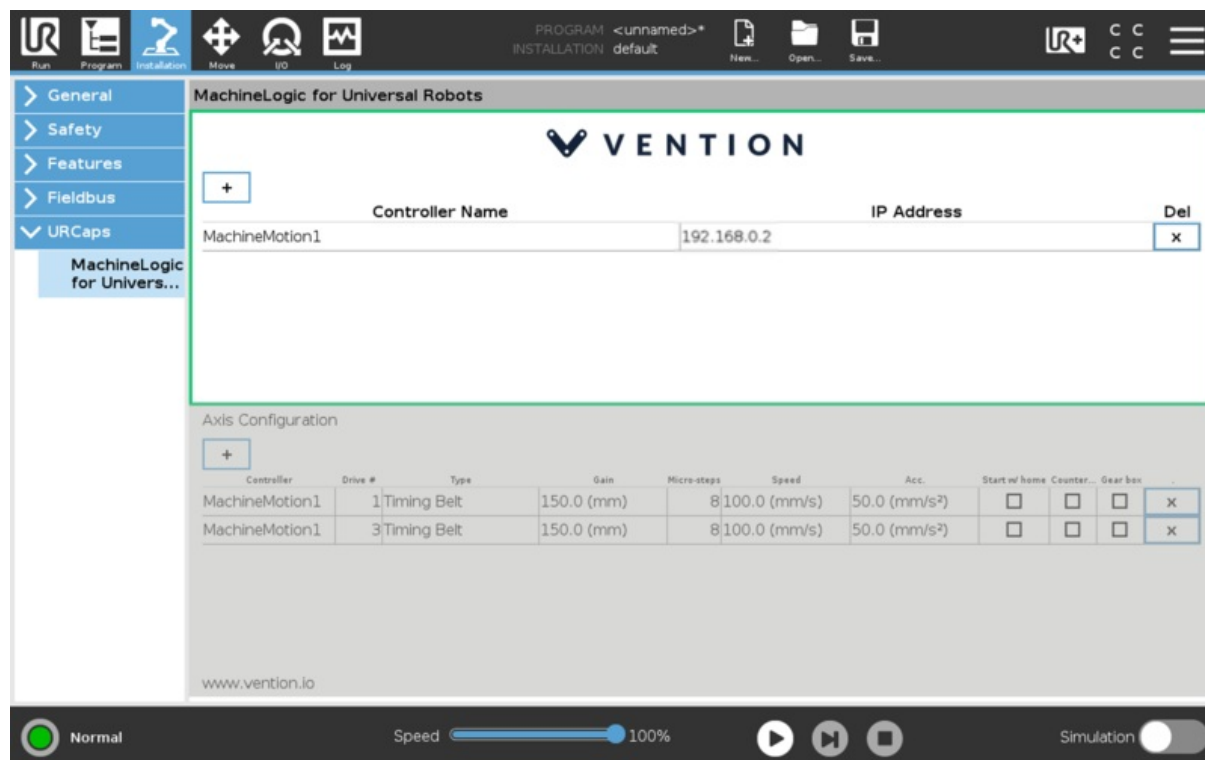


Figure 15: Upper window of the Vention URCap configuration screen

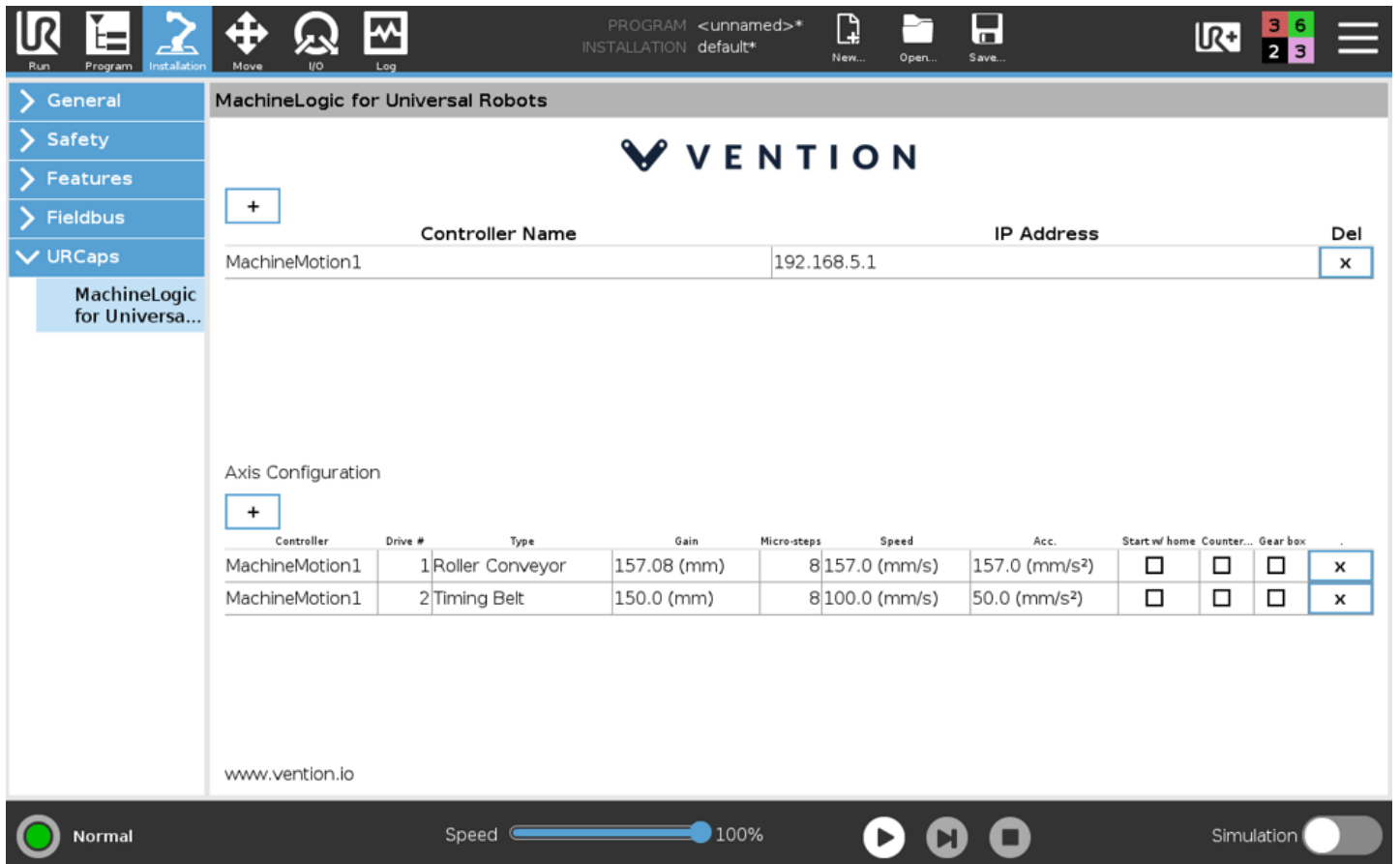


Figure 16: For the Robot Safety Module networking method, the IP address needs to be set to 192.168.5.1

4.2 Lower Window

The lower window of the Vention URCap defines actuators for linear axes of motion (see Figure 17). For example, the system shown in Figure 17 has two actuators linked to the controller, which is called **MachineMotion1**. These actuators are plugged into drive connectors one, and three of the controller, hence the (1), (3) appearing under the **Drive #** setting.

Note: The configuration of the actuators must be done on the MachineMotion controller. The installation screen of the URCap only populates the commands of the URCap.

- **Controller:** Name of the controller on which the actuator is plugged
- **Drive Index:** Indicates which connector the actuator is connected to on the MachineMotion controller
- **Type:** Indicates the type of actuator. Setting the type will populate the **Gain, Micro-stepping, Speed, and Acceleration** fields with default values, but you can still edit them if you wish to
- **Gain:** Mechanical gain of the mechanical system in mm or degrees per motor turn
- **Micro-stepping:** These settings must match the micro-stepping setup of the drives inside the MachineMotion controller (8 is the default)
- **Speed:** Default actuator displacement speed in mm/s, if none is specified in the program
- **Acceleration:** Default actuator displacement acceleration in mm/s², if none is specified in the program
- **Start with home:** Indicates whether the MachineMotion should perform a homing sequence before the start of each program
- **Counterclockwise:** Select this to reverse the direction of motor rotation for the axis
- **Gear box:** Select this if you are using a 5:1 gear box so the system can automatically adjust your gain

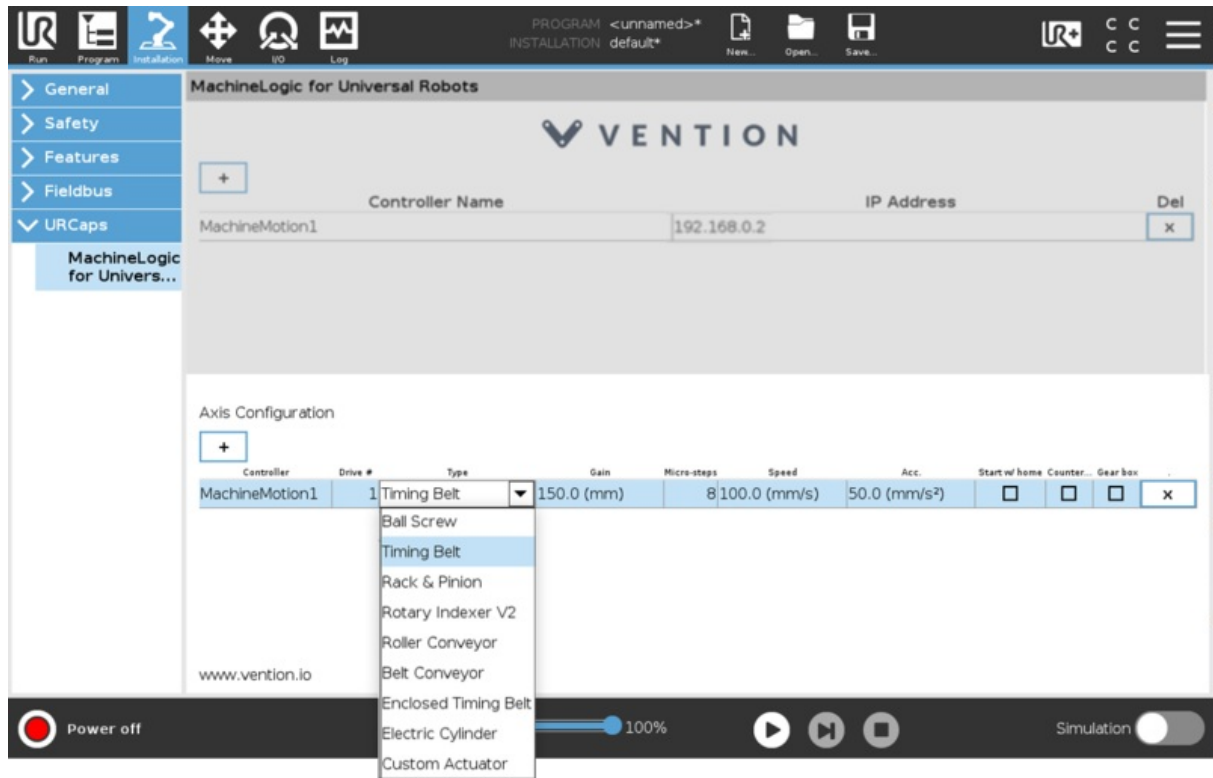


Figure 17: Vention URCap configuration screen

After configuring the installation in both windows, click **Save** at the top of the screen to complete.

5. Use MachineLogic for Universal Robots

5.1 Program Screen

Navigate to the program screen to create a robot program in the URCap.

1. Start by clicking the **Program** icon on the right-hand side of the top toolbar.
2. Then opening the **URCaps** drop-down,
3. And choosing the **MachineLogic for Universal Robots** URCap

The three steps are outlined in Figure 18 below:

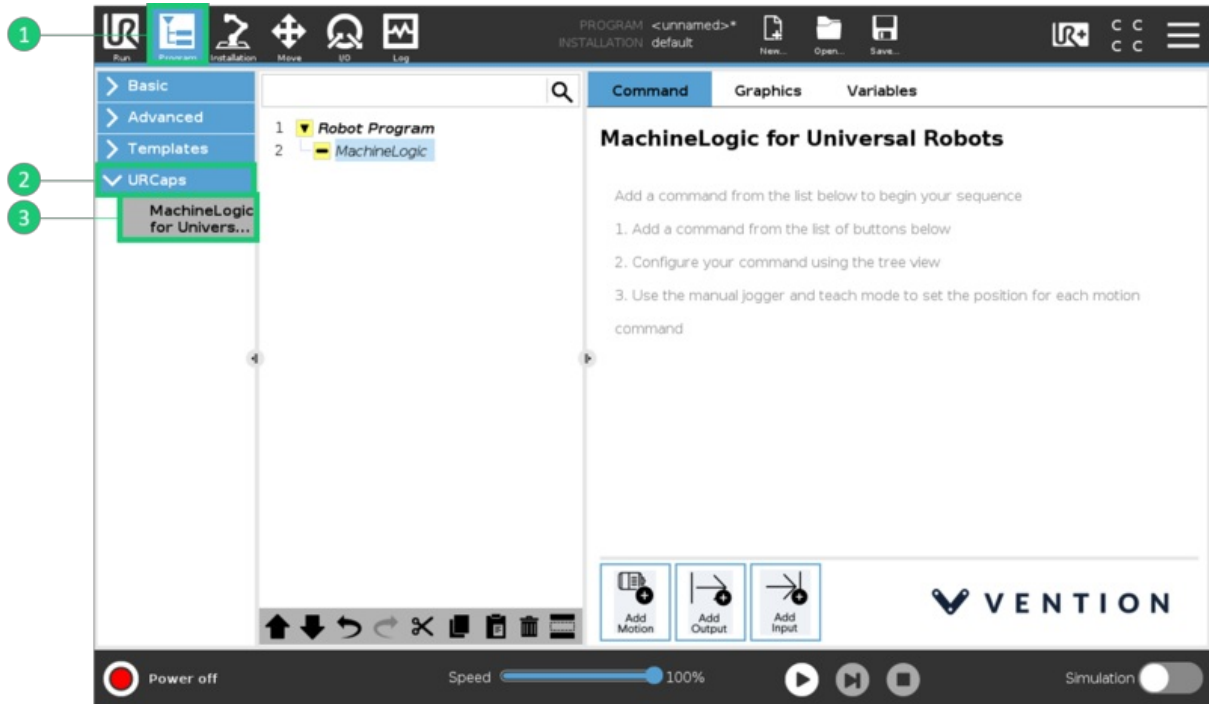


Figure 18: Opening the program screen to create a robot program in 3 steps.

5.2 Manual Control

To manually control your actuators from the UR Teach Pendant you will need to use the **Jogger** feature of the URCap. Open the **Jogger** by clicking on the UR+ screen located right-hand side of the top toolbar (See Figures 19a & 19b).

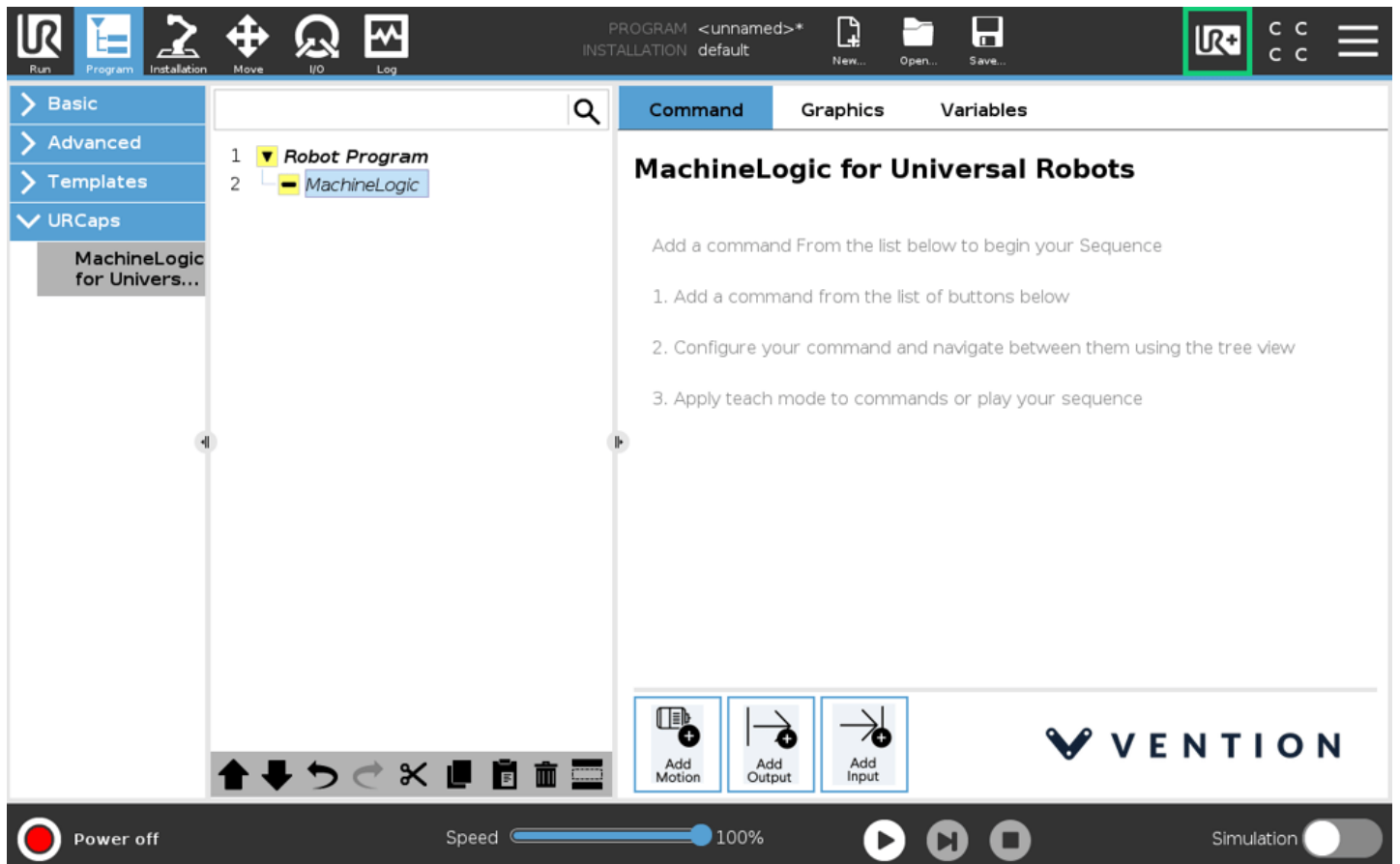


Figure 19a: Click the UR+ button to open the Jogger menu for manual control of your actuators

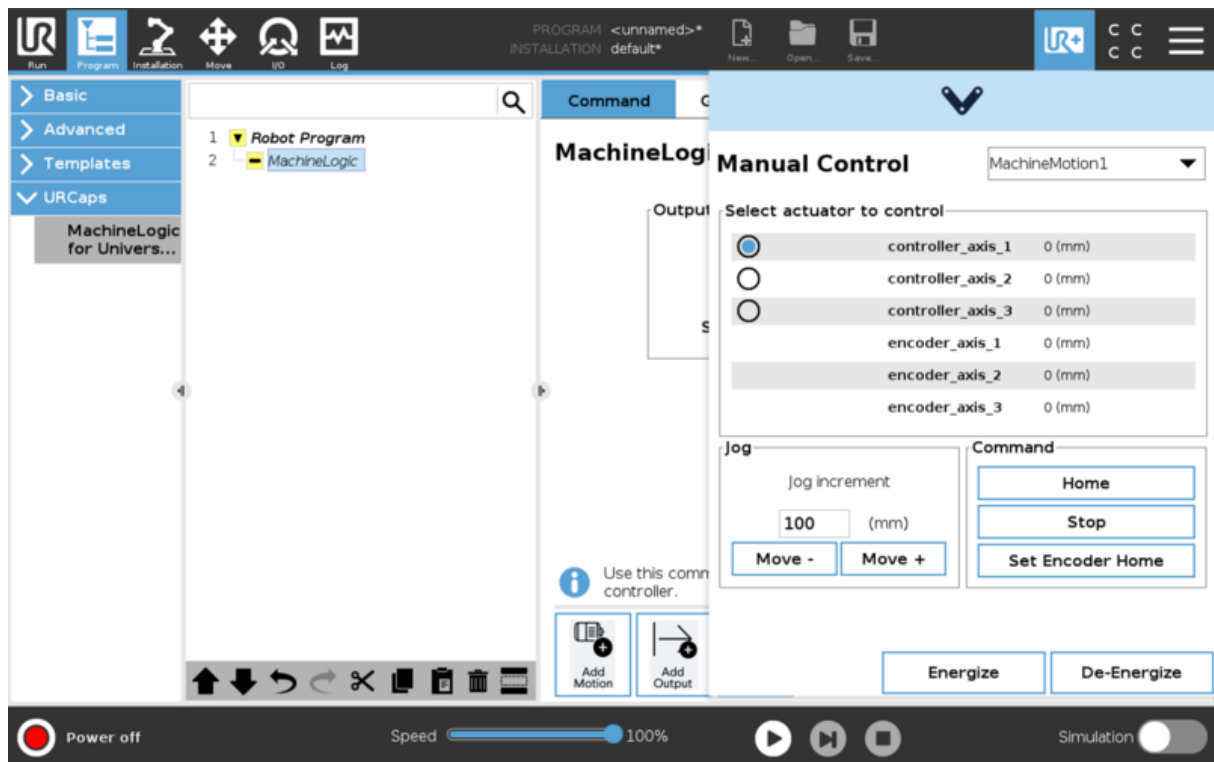


Figure 19b: Jogger menu for manual control

The input fields in the Jogger screen (as labelled in Figure 20) are explained below:

1. **Controller Name:** Choose the MachineMotion controller to which your actuator(s) is connected.
2. **Actuator Name and Position:** In the list of controllers, you can select the actuator you want to manually control.
3. **Actuator & Encoder Jogger:** To jog the actuator and encoder to a new position, change the jog increment to the desired value and press **Move +** and **Move -** buttons to execute a move relative in the selected direction.
4. **Encoder commands:** In the command area, you can 'Home' the selected or 'Stop' all motion on all actuators. You can also set a new position as the encoder's zero by pressing 'Set Encoder Home'.
5. **MachineMotion controller control:** Energize and De-Energize the MachineMotion Controller directly from the pendant.

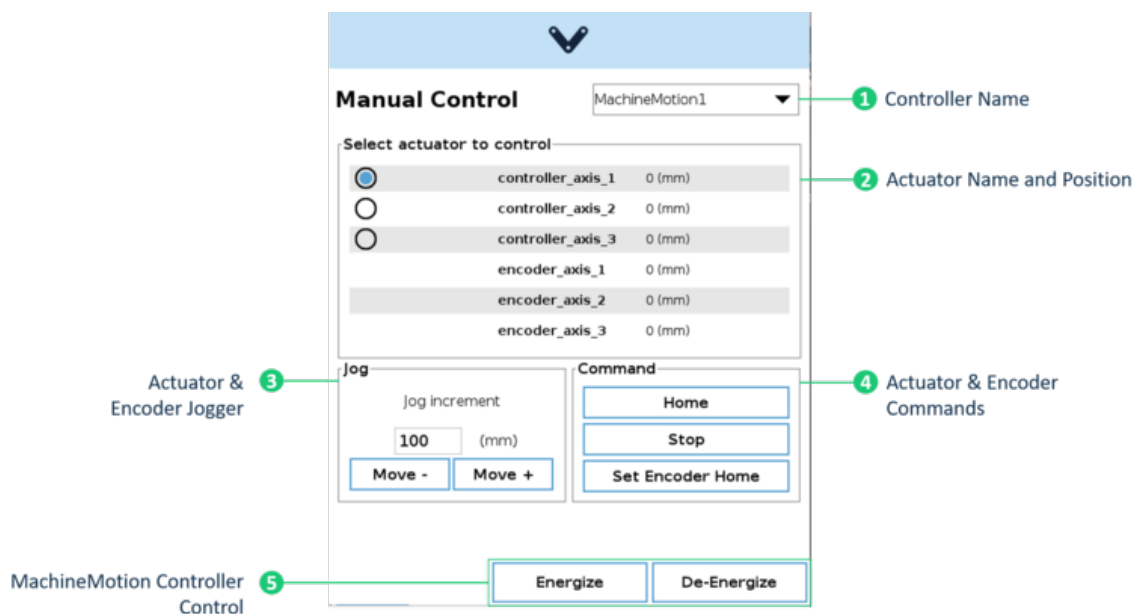


Figure 20: Input fields in the Jogger screen.

5.3 Command Screen

MachineLogic for UR contains 3 primary commands, which can be added to your robot program through the teach pendant screen.

In the Command tab of the program window, you will see the basic instructions for building your sequence. Build your sequence by choosing one of the 3 commands located at the bottom of the program window (Figure 21): **Add Motion, Add Output, Add Input**

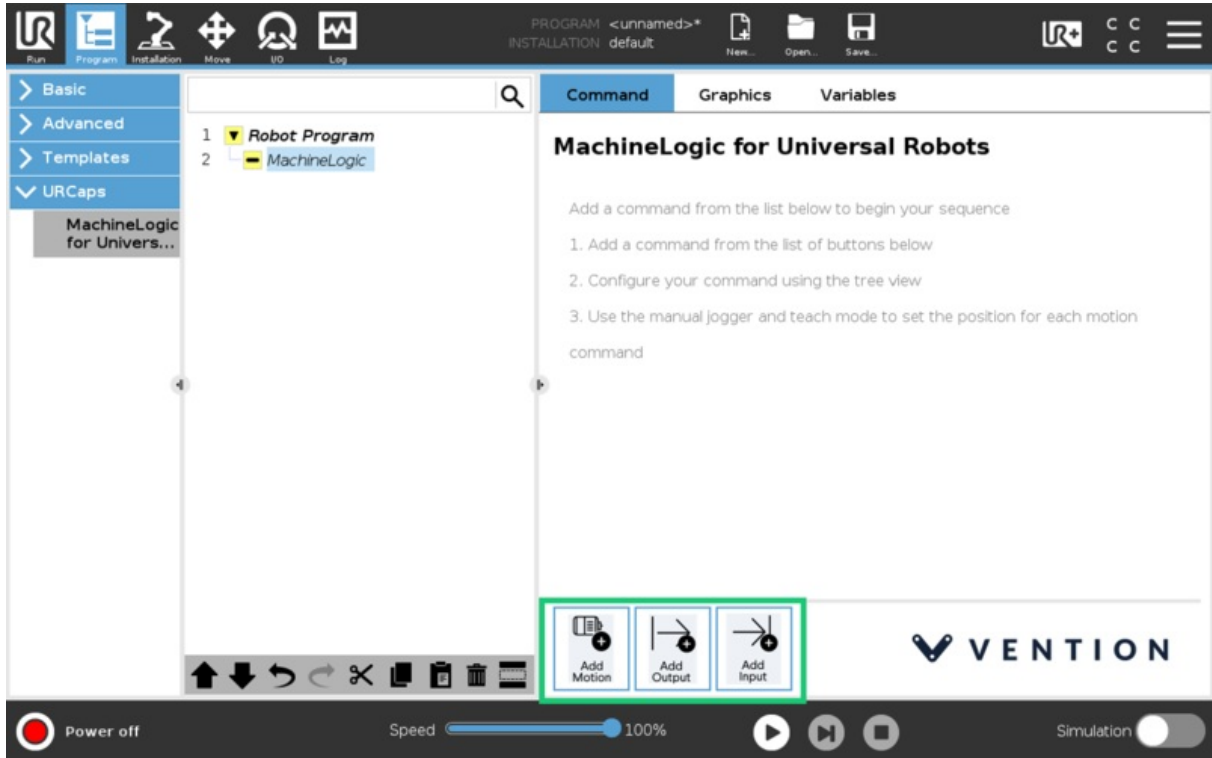


Figure 21: Add Motion, Add Output and Add Input buttons in the MachineLogic for UR Command Tab

5.3.1 Add Motion

The **Add Motion** command is for building sequences that will move your equipment. Typically, the required fields are:

- **Controller:** The name of the MachineMotion controller to execute the motion command. This field is mandatory for all motion commands.
- **Actuator Name:** The name of the actuator to be set in motion. Note that you can add and control multiple actuators in one command by clicking the '#' symbol. (This must be done as per the Note in section 4.2 of this document).
- **Actuator Position:** The end position of the actuator in [mm] for linear actuators or [degrees] for rotary actuators.
- **Command:** This refers to the type of motion and the options include *Move to Position*, *Move Relative*, *Move Relative Combined*, *Move to Position Combined*, *Move to Closest Angle* and *Push* (for pneumatic actuators).
- **Execution:** Used to specify if the command is executed in series or in parallel with other commands.
- **Speed:** This refers to the desired speed, in [mm/s] or [deg/s], of the actuator during the move.
- **Acceleration:** This refers to the desired acceleration, in [mm/s²] or [deg/s²], of the actuator during the move.
- **Address:** This is a field specific to pneumatic actuators. It refers to the pre-installed address on the I/O expander that connects the actuator to the MachineMotion controller.

The following is a summary table of all **Add Motion** commands, their required fields, functions and the expected inputs:

Table 6: Add Motion Command Inputs by Actuator Type

Actuator Type	Actuator Inputs	Motion Command	Motion Inputs
Timing Belt		Home	
Enclosed Timing		Move Relative	
Belt Ball Screw		Move Relative Recover	Execution
Enclosed Ball Screw	Actuator Position [mm]	Move Relative Immediate	Speed [mm/s]
Rack and Pinion		Move to Position	Acceleration [mm/s ²]
Rack and Pinion V2		Move to Position Recover	
Electric Cylinder		Move to Position Immediate	

Actuator Type	Actuator Inputs	Motion Command	Motion Inputs
Rotary Indexer V2	Actuator Position [deg]	Home Move Relative Move Relative Recover Move Relative Immediate Move to Position Move to Position Recover Move to Position Immediate Move to Closest Angle Start Continuous Move Stop Continuous Move	Execution Speed [deg/s] Acceleration [deg/s ²]
Belt Conveyor Roller Conveyor	Actuator Position [mm]	Move Relative Move Relative Recover Start Continuous Move Stop Continuous Move	Execution Speed [mm/s] Acceleration [mm/s ²]
Pneumatic	N/A	Push Pull Idle	Execution Address Valve
Custom Actuator	Actuator Position [mm]	Home Move Relative Move Relative Recover Move Relative Immediate Move to Position Move to Position Recover Move to Position Immediate Move to Closest Angle Start Continuous Move Stop Continuous Move	Execution Speed [mm/s] Acceleration [mm/s ²]

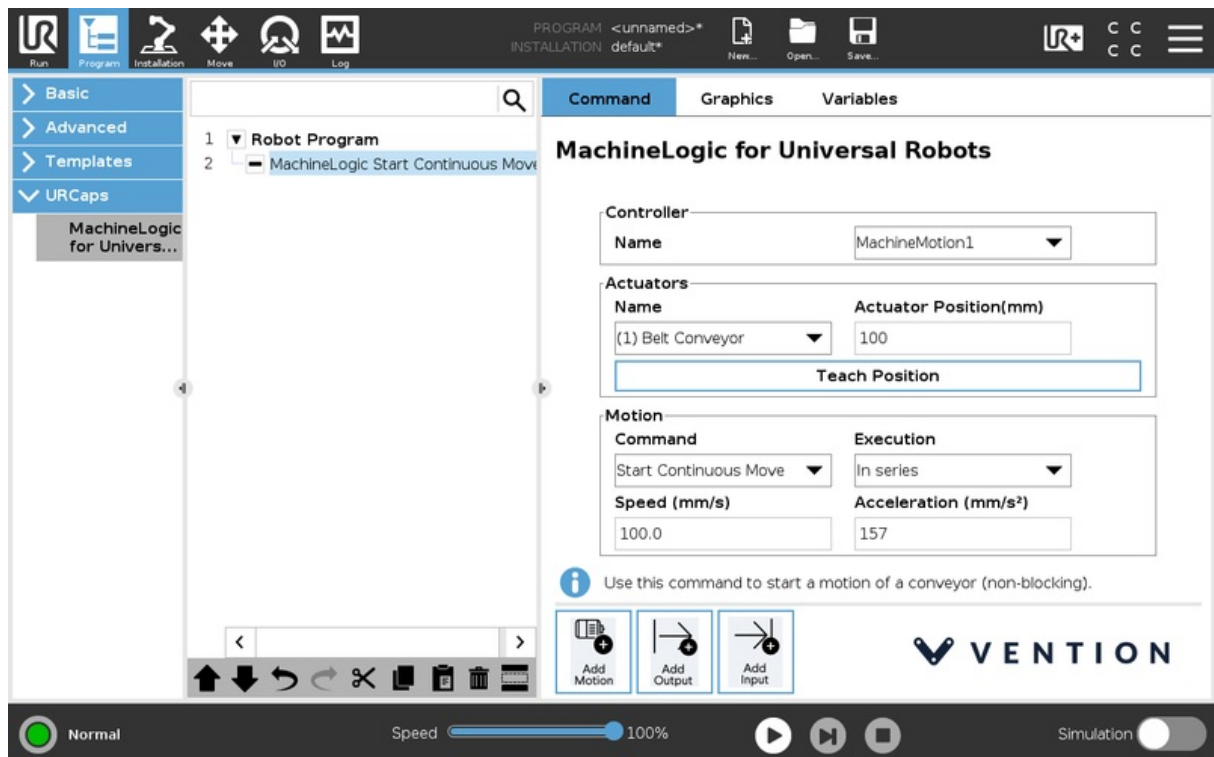


Figure 22: Add Motion command inputs for belt and roller conveyors

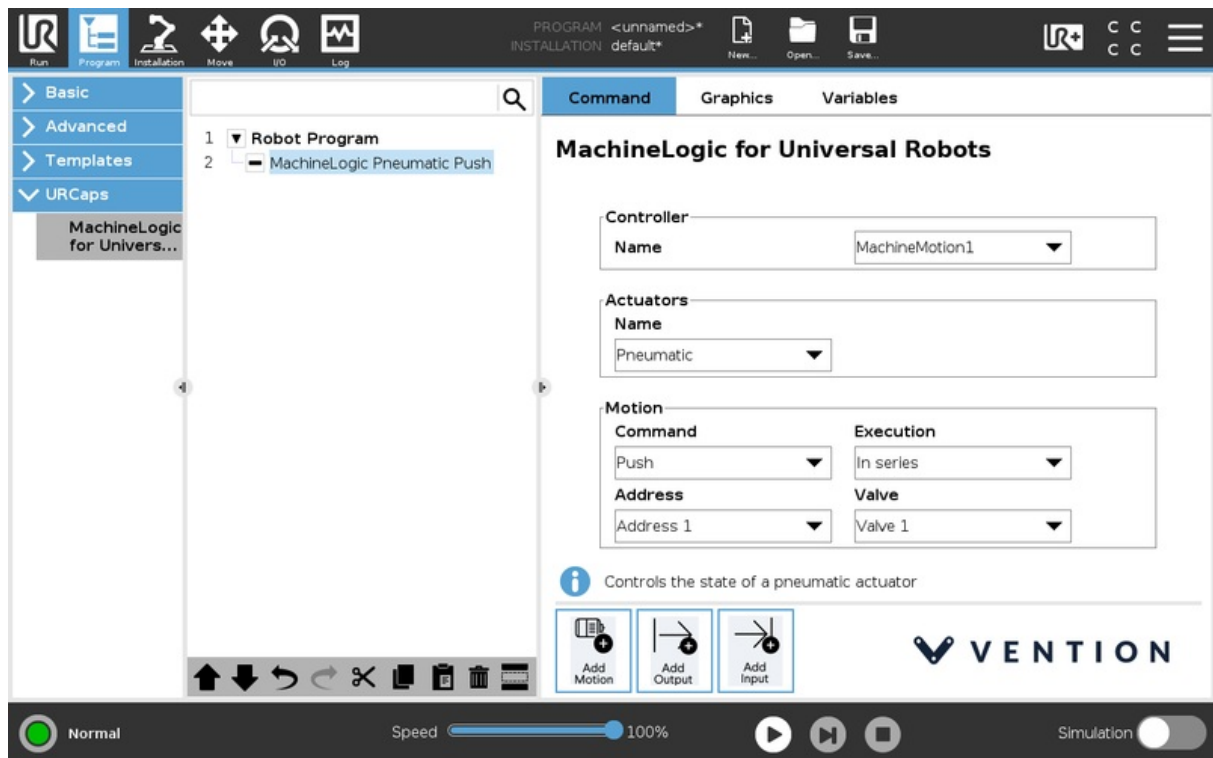


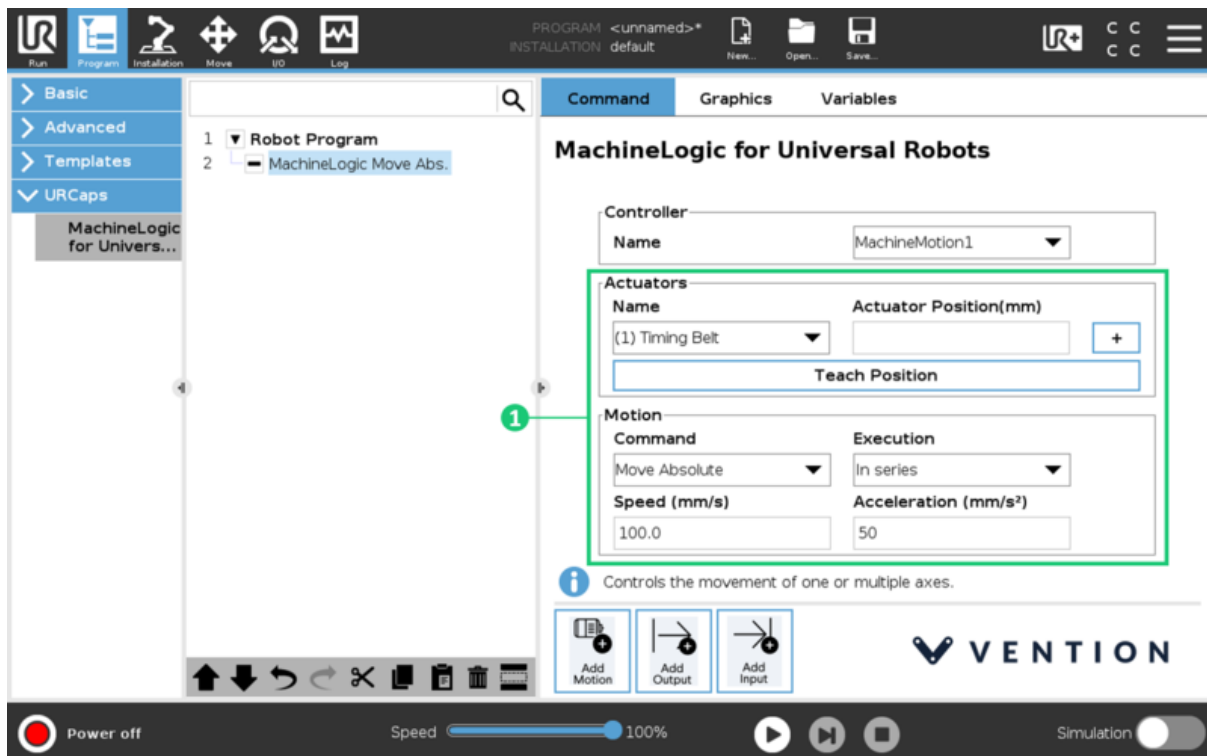
Figure 23: Add Motion command inputs for pneumatic actuators

5.3.2 Teach Position

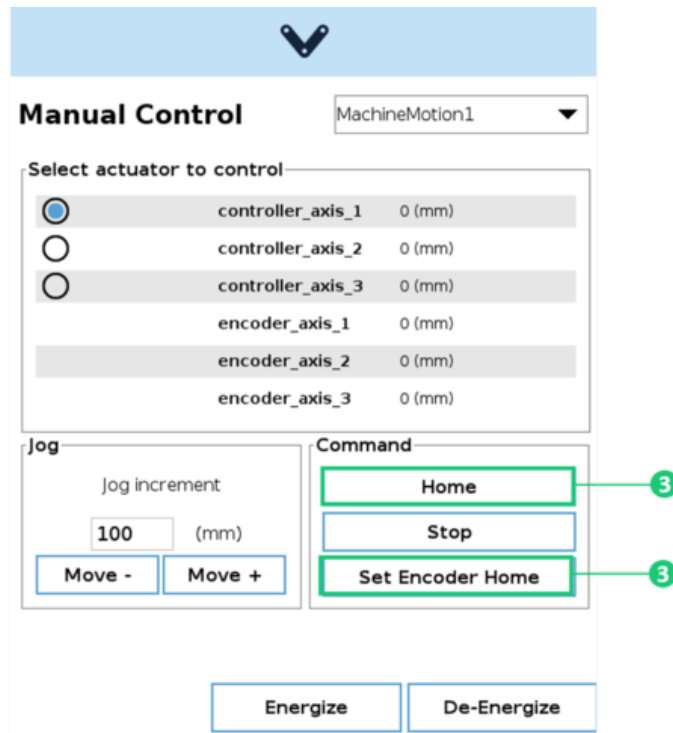
The Teach Position feature is useful for programming quick and precise motion commands. The feature allows you to 'teach' the program your desired final position by physically moving your actuator.

There are 6 steps to using Teach Position outlined below. If you plan on completing a Move to Position, start by homing in manual control as seen in step 3.

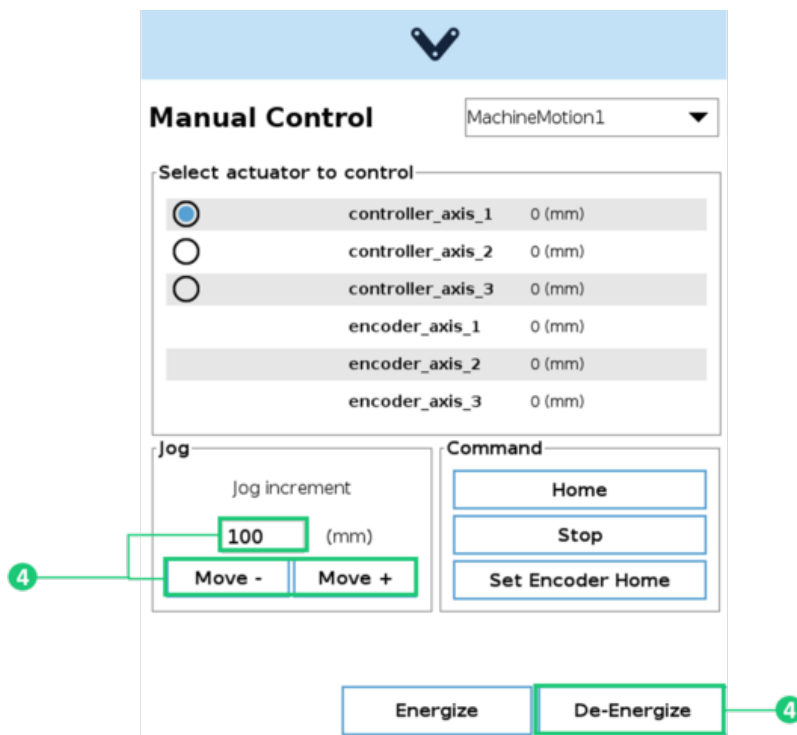
1. Set up your motion command with the actuator name, motion command type, execution, speed and acceleration values (see Figure 22).



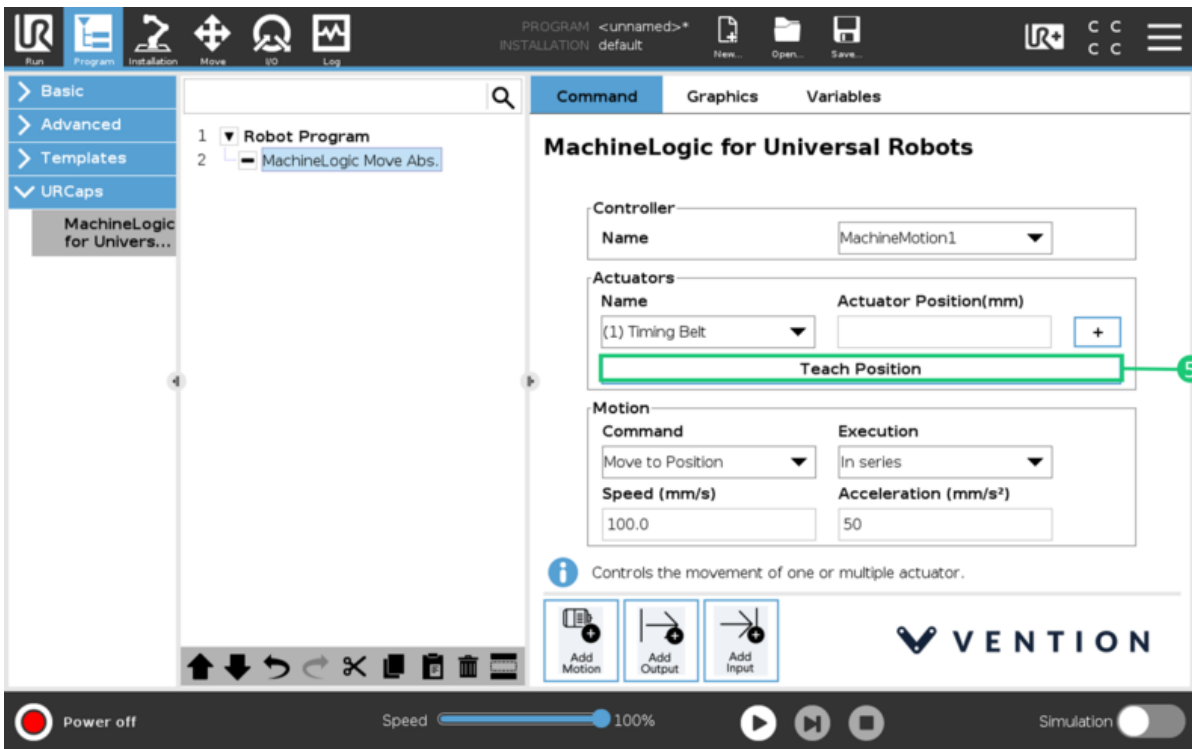
2. Open the **Jogger** menu. Ensure that the correct MachineMotion controller and actuator are selected before proceeding.
3. If you are using **Move to position**, home the encoder by clicking **Home**, then click **Set Encoder Home**.
If you are using **Relative Move** click **Set Encoder Home** at your starting position. This way, the encoder will start measuring the distance from the starting position (see Figure 23).



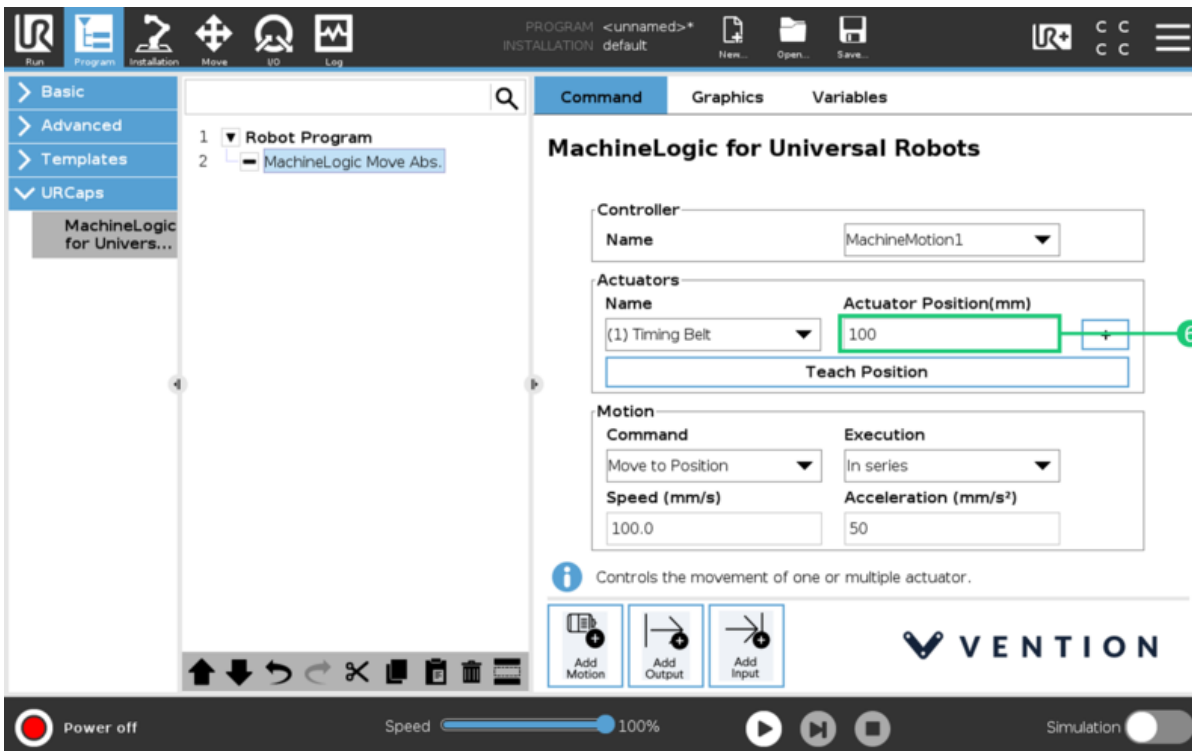
4. Then, either enter a value in the Jog input, use the **Move +** and **Move -** buttons or press **De-energize** and physically move the axis to the desired position (see Figure 24).



5. Once the axis is in the desired position, click **Teach Position** in the command screen (Figure 25)



6. Wait until the value of the desired position is populated in the **Actuator Position** before saving the program (see Figure 26).



5.3.3 Add Output

The Add Output commands are used to perform non-motion actions on the MachineMotion Controller and other components connected to the controller. There are 7 output command categories defined below. For each category, the user must specify which MachineMotion Controller should receive the command.

- **MachineMotion Energize/De-energize:** When set to De-energize, this command de-energizes all actuators connected to a MachineMotion Controller. Set the field to Energize to restore actuators connected to a controller and reset the software E-stop.
- **MachineLogic Set Position:** This command overrides the current position of an actuator or an encoder with the specified value.
- **MachineLogic Set Angle:** Use this command to override the angle at which a rotary indexer is set.
- **MachineMotion Safety Reset:** This command releases the MachineMotion system from a manual e-stop.
- **Digital I/O Module Outputs:** Use this command to change the state of a digital output.
- **Smart Power Switch:** Controls the state of the power switch.

- **Brake:** Controls the state of the brakes.

Table 7: Add Output Command Input Fields by Category

Category	Input Fields
MachineMotion Energize/De-energize	Select State: Energize, De-energize
MachineLogic Set Position	Actuator Position [mm] Encoder Position [mm]
MachineLogic Set Angle	Actuator Angle [deg]
MachineMotion Safety Reset	None Note: Before executing this command, you must release the physical E-stop button on the MachineMotion controller.
Digital I/O Module Outputs	Address (on the I/O expander) Port (on the I/O module) Output State: 1(ON), 0(OFF)
Smart Power Switch	Address (on the I/O expander) Output State: 1(ON), 0(OFF)
Brake	Address (on which drive) Output State: Unlock, lock

5.3.4 Add Input

The Add Input commands are used for receiving and storing status data from the MachineMotion controller and components connected to the controller. There are 6 input command categories defined below. For each category, the user must specify from which MachineMotion controller the input is received and in which variable the data should be stored. The variables can be used in your robot program.

- **MachineMotion Status:** Use this to check if the MachineMotion controller is processing a command.
- **MachineMotion Safety Status:** To receive and save the E-stop status of the MachineMotion controller.
- **MachineLogic Get Position:** Used to receive and save the current position of an actuator or encoder.
- **Digital IO Module Inputs:** To read and save the state of a digital input.
- **Is Motion Completed:** To receive the current state of the MachineMotion.
- **Wait for Motion Completion:** Wait for the motion to complete

Table 8: Add Input Command Input Fields by Category

Category	Input Fields
MachineMotion Status	Select Variable: 'busy' or 'available'
MachineMotion Safety Status	Select Variable: 'estop/status false' or 'estop/status true'
MachineLogic Get Position	Select Input - the actuator whose position will be stored Select Variable Input Type: <i>float</i> Input Variable: <i>distance in mm</i>
Digital IO Module Inputs	Address - on the I/O expander Select Port- the digital input whose state will be stored Select Variable Input Type: string Input Variable: '24V' or '0V'

Category	Input Fields
Is Motion Completed	Select Variable: 'In progress' or 'Completed'
Wait for Motion Completion	Select Variable: 'In progress' or 'Completed'

Using the Input Fields

Use the icons highlighted here (Figure 27) to:

- **Add** new variables to the list of variables
- **Edit** the selected variables
- **Delete** the selected variable

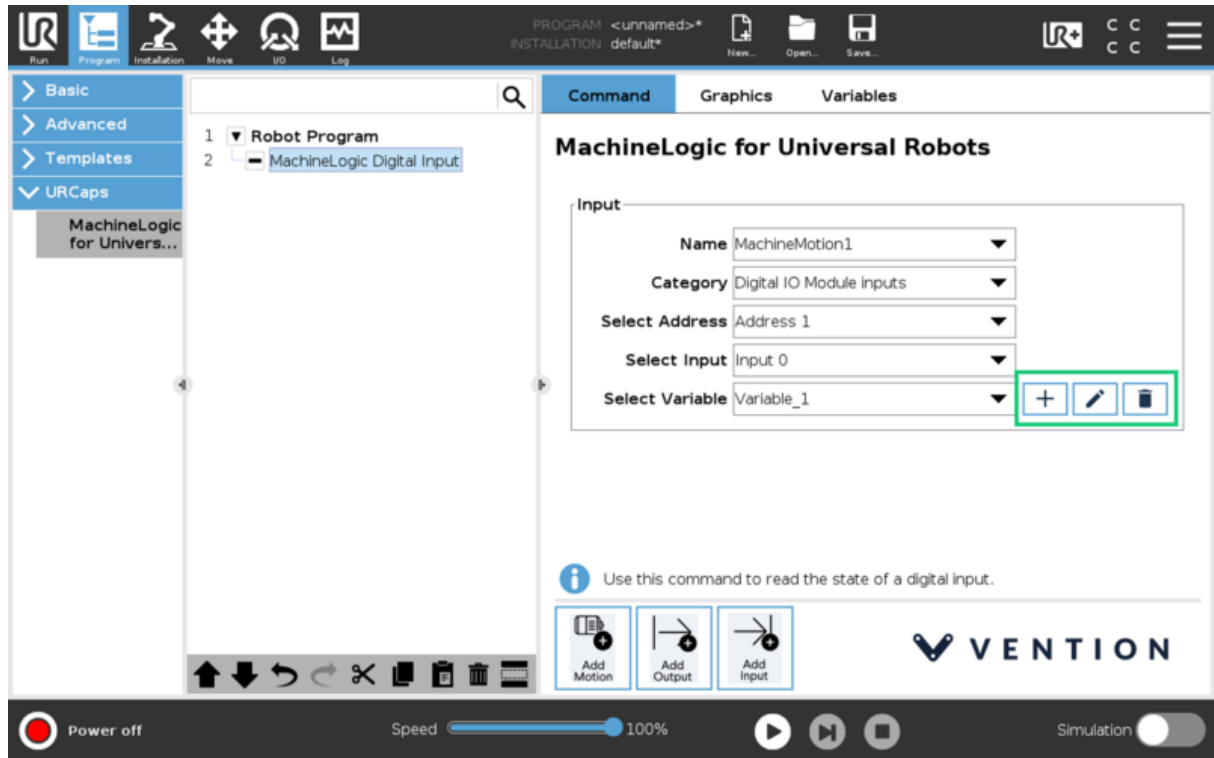


Figure 29: Use these 3 icons to add, edit and delete variables in your list.